

GULSHAN
Botnia
LIVING MADE BEAUTIFUL

Gulshan
HOMZ

Corp. Office: Grandstreet, Plot No. 2C, Vaibhav Khand, Indirapuram, Ghaziabad, Uttar Pradesh

Site Address: GH-03C, Sec-144, Noida Expressway | Phone: 95 8050 8050 | Email: sales@gulshanhomz.com

Rera Approved **UPRERAPRJ5857**

Disclaimer: The plans, specifications, images, brands and other details herein are only indicative and the Developer/ Owner/ Architect reserves the right to change any or all of these in the interest of the development. This printed material does not constitute an offer and / or a contract of any type between the Developer/ Owner and the recipient. Any purchaser/ lessee of this development shall be governed by the terms and conditions of the Agreement for Sale / Lease entered into between the parties, and no details mentioned in this printed material shall in any way govern such transactions. Tolerance of +/- 2% is possible in the unit areas on account of design and construction variances.

— 2&3 BHK LUXURY APARTMENTS —

A PROJECT BY GULSHAN HOMZ

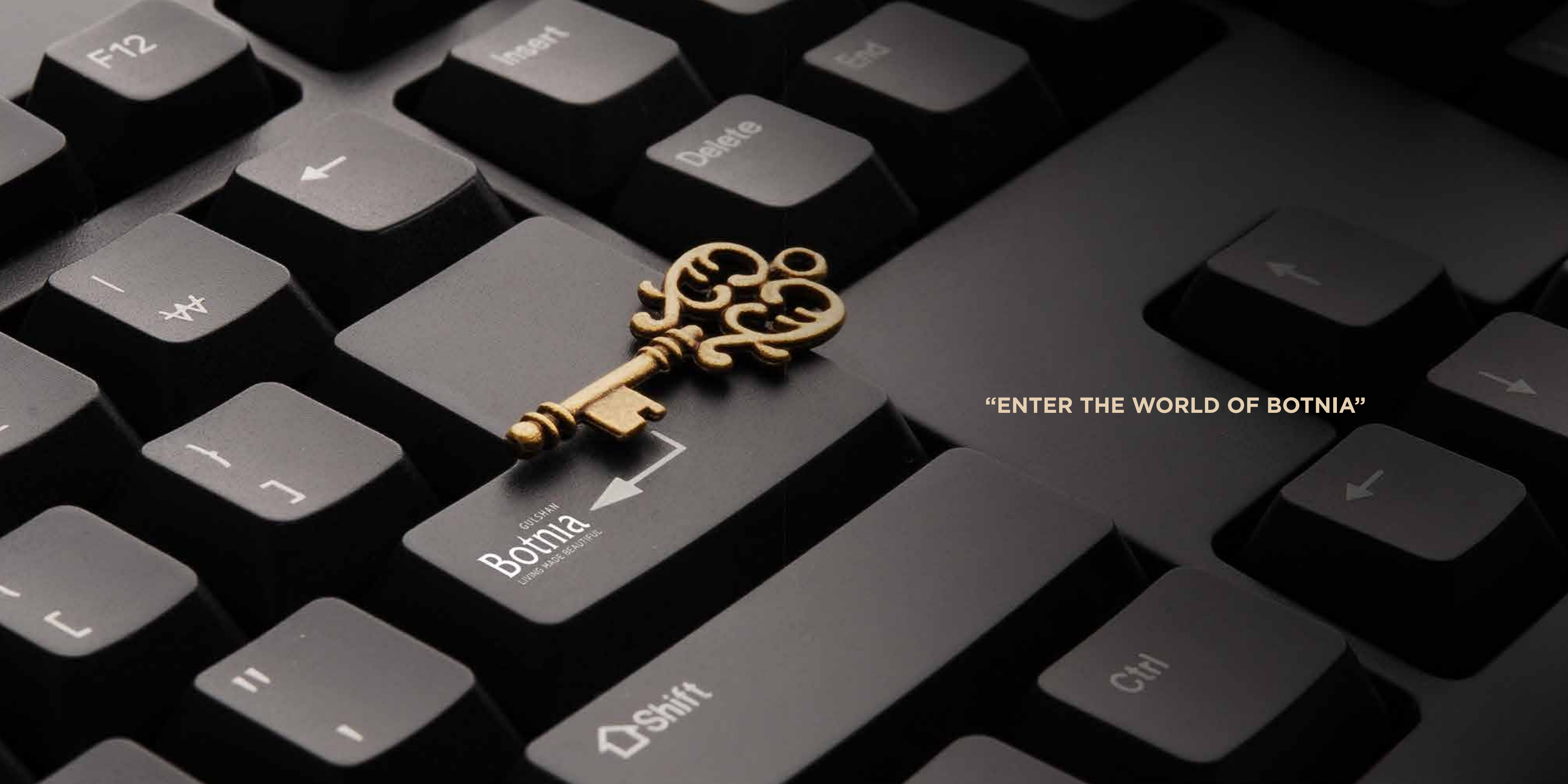
**“TODAY WE ARE SHAPING THE BUILDINGS,
SO THEY CAN SHAPE OUR TOMORROW!”**

- GULSHAN NAGPAL



Gulshan
HOMZ

GULSHAN
Botnia
LIVING MADE BEAUTIFUL



GULSHAN
Botnia
LIVING MADE BEAUTIFUL

“ENTER THE WORLD OF BOTNIA”

GULSHAN
Botnia
LIVING MADE BEAUTIFUL

WELCOME TO AN
OASIS OF EXTRAVAGANCE!

THERE ARE NUMEROUS SKYROCKETING PROJECTS ADORNING THE CITY'S LANDSCAPE AND THEN THERE IS GULSHAN BOTNIA. EQUIPPED WITH WORLD-CLASS LUXURY AND ARCHITECTURAL EXCELLENCE, IT IS WHERE LUXURY MEETS SUSTAINABLE LIVING. THE GREEN GARDENS OF BOTNIA YIELD FRUITS OF JOY AND PROSPERITY, MAKING WAY FOR MOMENTS AND MEMORIES OF BLISSFUL LIVING.







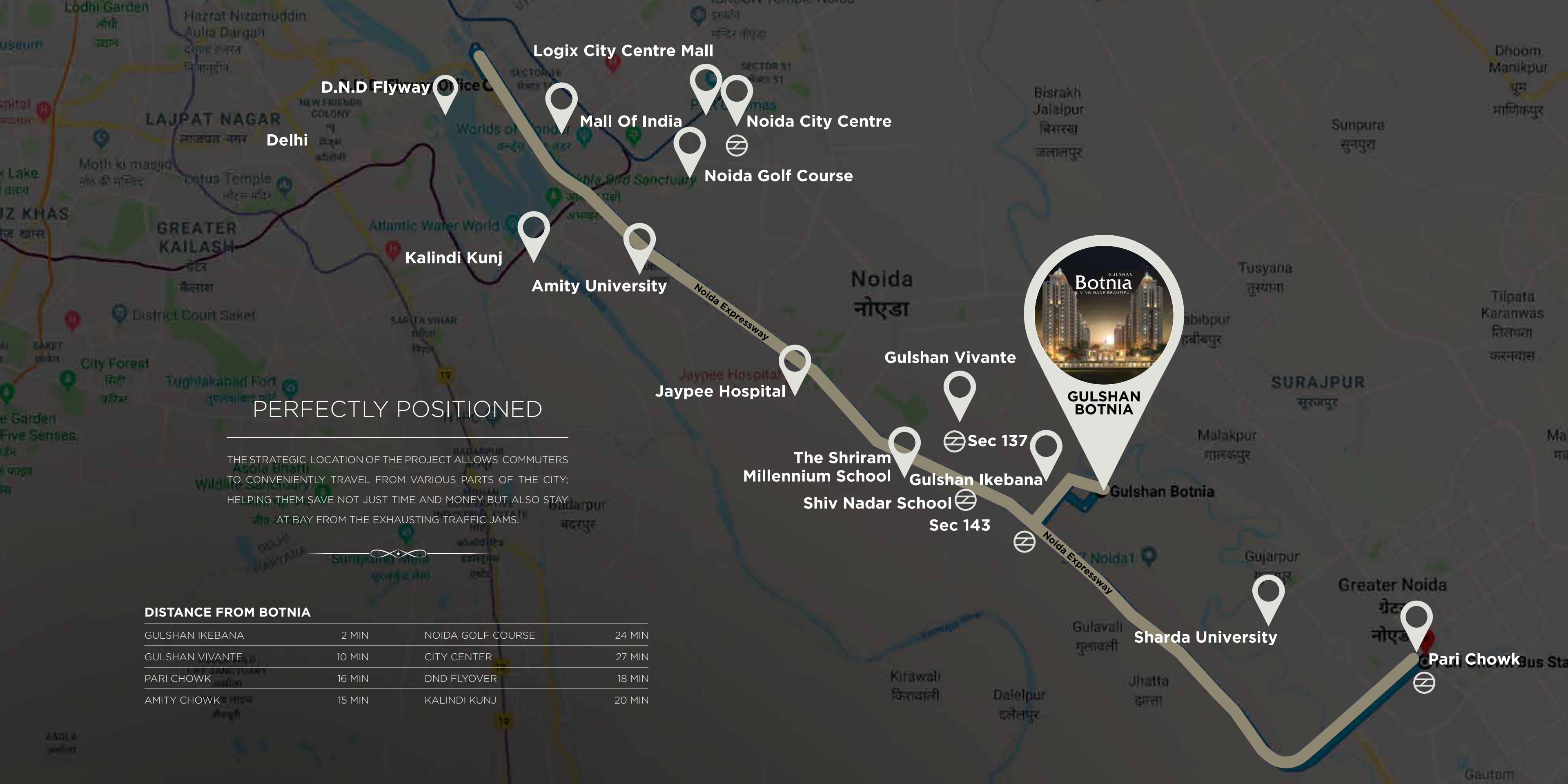
LIVING MADE BEAUTIFUL

AN EPITOME OF CLASS AND LUXURY, BOTNIA IS A HOUSING PROJECT THAT IS BEING DEVELOPED TO ENCHANT YOUR SENSES AND BEAUTIFY YOUR LIFE. WE AT GULSHAN HOMZ ARE COMMITTED TO EXCELLENCE WHEN IT COMES TO QUALITY. HOWEVER, WHILE DEVELOPING THIS HOUSING PROJECT, WE ARE MERGING QUALITY CONSTRUCTION WITH LUXURY LIVING. AN ENTICING COMBINATION OF QUALITY AND BEAUTY, BOTNIA IS THE ROSE IN OUR GARDEN THAT WE ARE DEVELOPING AND NURTURING WITH GREAT EFFORTS AND CARE.



—∞—
COME ALIVE AT A PLACE YOU CAN
CALL YOUR OWN.
—∞—





PERFECTLY POSITIONED

THE STRATEGIC LOCATION OF THE PROJECT ALLOWS COMMUTERS TO CONVENIENTLY TRAVEL FROM VARIOUS PARTS OF THE CITY; HELPING THEM SAVE NOT JUST TIME AND MONEY BUT ALSO STAY AT BAY FROM THE EXHAUSTING TRAFFIC JAMS.

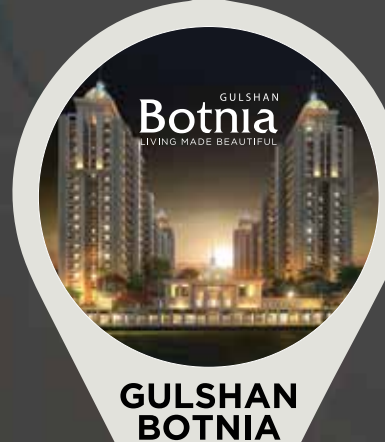
DISTANCE FROM BOTNIA

GULSHAN IKEBANA	2 MIN	NOIDA GOLF COURSE	24 MIN
GULSHAN VIVANTE	10 MIN	CITY CENTER	27 MIN
PARI CHOWK	16 MIN	DND FLYOVER	18 MIN
AMITY CHOWK	15 MIN	KALINDI KUNJ	20 MIN

Delhi
D.N.D Flyway
Logix City Centre Mall
Mall Of India
Noida City Centre
Noida Golf Course

Kalindi Kunj
Amity University
Jaypee Hospital

Gulshan Vivante
Sec 137
The Shriram Millennium School
Gulshan Ikebana
Shiv Nadar School
Sec 143



GULSHAN BOTNIA

Gulshan Botnia
Sharda University
Pari Chowk Bus Sta

WHY SECTOR 144 NOIDA

UNIVERSITIES

AMITY UNIVERSITY
SECTOR 125 | 15 MIN

BIMTECH
KNOWLEDGE PARK 2
GREATER NOIDA | 15 MIN

GAUTAM BUDDHA UNIVERSITY
YAMUNA EXPRESS WAY | 20 MIN

SHARDA UNIVERSITY
KNOWLEDGE PARK 3
GREATER NOIDA | 20 MIN

NOIDA INTERNATIONAL UNIVERSITY
SECTOR 17 A,
YAMUNA EXPRESS WAY | 25 MIN

HOSPITALS

JAYPEE HOSPITAL
SECTOR 128 | 15 MIN

FORTIS HOSPITAL
SECTOR 62 | 35 MIN

APOLLO HOSPITAL
SECTOR 26 | 30 MIN

SCHOOLS

SHIV NADAR SCHOOL
SECTOR 168 | 13 MIN

THE SHRIRAM MILLENNIUM SCHOOL
SECTOR 135 | 14 MIN

GENESIS GLOBAL SCHOOL
SECTOR 132 | 14 MIN

DPS NOIDA
SECTOR 132 | 15 MIN

JBM INTERNATIONAL SCHOOL
SECTOR 132 | 15 MIN

LOTUS VALLEY SCHOOL
SECTOR 126 | 20 MIN

PATHWAYS SCHOOLS
SECTOR 100 | 22 MIN



CONNECTIVITY

METRO STATION
SECTOR 144 | 05 MIN
SECTOR 143 | 05 MIN
SECTOR 137 | 10 MIN

DND FLYWAY | 18 MIN

SHOPPING

MALL OF INDIA
SECTOR 18 NOIDA | 20 MIN

GREAT INDIA PLACE
SECTOR 18 NOIDA | 20 MIN

GARDENS GALLERIA
SECTOR 38 | 20 MIN

GRAND VENICE
GREATER NOIDA | 25 MIN

LOGIX CITY CENTRE MALL
SECTOR 32 NOIDA | 25 MIN

MULTIPLEXES

PVR
MALL OF INDIA
SECTOR 18 NOIDA | 20 MIN

PVR SUPERPLEX
LOGIX CITY MALL
SECTOR 32, NOIDA | 25 MIN

CARNIVAL CINEMAS
GREAT INDIA PLACE
SECTOR 18, NOIDA | 20 MIN



— ∞ —
A SAFE HAVEN FOR YOUR
LOVED ONES
— ∞ —



COMPUTER GENERATED IMAGE, INDICATIVE ONLY

WORLD CLASS AMENITIES

GULSHAN BOTNIA IS A DREAM HOME THAT ENVISAGES ALL THE AMENITIES THAT CAN OFFER YOU AN EXCLUSIVE LUXURY LIVING EXPERIENCE. WHILE PLANNING AND DESIGNING THE UPSCALE APARTMENTS, WE INSISTED ON INCLUDING AMENITIES AND ELEMENTS THAT ARE WORLD-CLASS AND EXQUISITE. OUR MISSION IS TO MEET AND EXCEED THE NEEDS AND ASPIRATIONS OF OUR HOMEOWNERS.

MULTI TIER 24*7 SECURITY

BEAUTY SALON

AMPLE COVERED PARKING SPACE

BADMINTON COURT

AC GYM

JOGGING TRACK

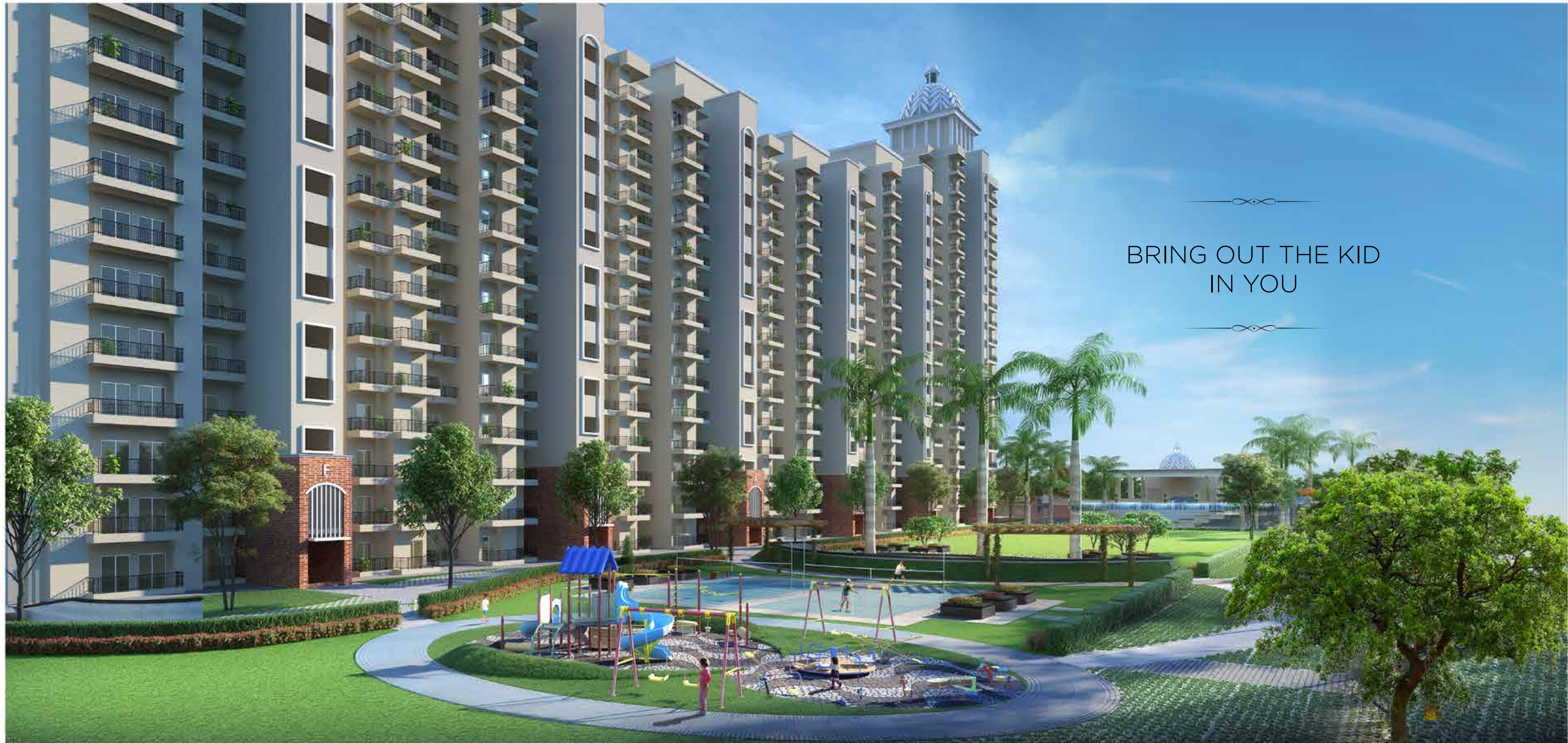
BANQUET HALL

ULTRA MODERN CLUB

AMPHITHEATER

CENTRAL LANDSCAPE PODIUM

ELEGANT ENTRANCE LOBBY
IN EACH TOWER



— ∞ —
BRING OUT THE KID
IN YOU
— ∞ —



REJUVENATE & REWIND



RELAX, TAKE A BREAK FROM
THE MONOTONY



GREEN EXPANSES TO SOOTHE
YOUR EYES



BRINGING CULTURES TOGETHER AND COMMUNITIES CLOSER

IN THE TRUE SENSE OF 'VASUDHAIVA KUTUMBAKAM' WHICH MEANS "THE WORLD IS ONE FAMILY", HOME KONNECT IS OUR PURSUIT TO BRING FORWARD LIKE-MINDED RESIDENTS TO CREATE A LIFE TIME OF BONDING WITH THE CO-HABITANTS. ALONGWITH NUMEROUS ACTIVITIES AND INITIATIVES WE AIM TO RE-IGNITE THE ZEAL FOR LIFE WITH REGULAR INTERACTIONS AND CHANCED RENDEZVOUS FOR ALL MEMBERS.

THE PROGRAM IS MEANT FOR PEOPLE FROM ALL AGE GROUPS AND GENDERS, CONDUCTED ON A FREQUENT BASIS. THIS INSPIRES THE RESIDENTS TO SOCIALISE AND GET TO KNOW EACH OTHER BETTER. A SIMPLE YET EFFECTIVE WAY OF TURNING NEIGHBORS INTO LONG TIME FRIENDS. ADDITIONALLY, THE INITIATIVE ALSO INSPIRES RESIDENTS TO COME FORWARD AND BUILD A BETTER TOMORROW BY BEING ECO FRIENDLY AND ENVIRONMENT SAVVY THUS DOING THEIR BIT FOR MOTHER EARTH.

HOME KONNECT, A FLAGSHIP PROGRAM BY GULSHAN HOMZ IS AIMED AT MAKING AN ALL-ENCOMPASSING CIRCLE OF SOCIETY WITH COMPASSION AND HARMONY AS THE BASIS OF CO-EXISTANCE. GULSHAN HOMZ HOME KONNECT OFFERS ITS INHABITANTS A WONDERFUL CHANCE TO GROW AND BIND TOGETHER AS A COMMUNITY.

Home Konnect - The Power of a Happy Greeting in a Smile and a Hello.



COMPUTER GENERATED IMAGE, INDICATIVE ONLY

Gulshan

QUALITY MEETS ARCHITECTURAL EXCELLENCE

AN EPITOME OF QUALITY, COMMITMENT, AND PROFESSIONALISM, GULSHAN HOMZ LEADS THE REALTY DOMAIN WITH LIVING LANDMARKS OF ARCHITECTURAL EXCELLENCE. WITH AN ETERNAL CREED TO FULFILL OUR COMMITMENT, WE AT GULSHAN HOMZ ARE

Responsible . Reliable



— GULSHAN HOMZ IS KNOWN FOR —

STAGE PASSING OF EVERY ACTIVITY
CROSS-CHECKED WITH A CHECKLIST.

MAKING PERFECT AND STURDY
STRUCTURES IN LINE WITH THE DESIRED LEVELS.

FOLLOWING PROPER CONSTRUCTION
MANUALS AND DEFINED PROCESSES.

UNCOMPROMISED FINISHING
ENSURED BY PROPER SUPERVISION.

USING LATEST TECHNOLOGIES, EQUIPMENT AND
PROCESSES FOR FLAWLESS CONSTRUCTION.

VISIT OUR CONSTRUCTION MUSEUM, AND
EXPERIENCE THE QUALITY THAT GOES INTO
BUILDING EACH LAYER OF THE PROCESS.

AIR QUALITY AT BOTNIA

IF ONLY WE KNOW HOW TO ADD TECHNOLOGY TO THE NATURAL RESOURCE WE ALL CAN BREATHE EASIER, LIVE HEALTHIER AND WORK BETTER. AND THAT'S WHAT GULSHAN BOTNIA ENSURES. A BETTER AIR QUALITY OR FRESHER AIR FOR THE RESIDENTS BY PUTTING A COMBINATION OF PLANTS THAT INCREASE THE OXYGEN LEVEL ALONG WITH MECHANIZED METHODS.

IN THE NATURAL WAY

WE CAN ENSURE PLANTS LIKE WARNECK DRACAENA, ARECA PALM AND MILT ARE IN ABUNDANCE TO PROVIDE FRESH AIR ALL AROUND US. THESE BEAUTIFUL INDOOR PLANTS HELP IN REDUCING CO2 LEVELS AND PRODUCE AMPLE OXYGEN. THEY ALSO HELP IN ABSORBING VOCs WHILE THE GREENS ALLOW IMMENSE COOLNESS IN THE AIR AND ARE A SIGHT FOR TIRED CITY EYES.

IN THE MECHANISED WAY

WE CAN HAVE AMPLE ELECTRONIC AIR CLEANERS (EACS) AT WORK TO ENSURE REGULAR REMOVAL OF POLLUTANTS FROM THE AIR. TO HELP MAINTAIN HUMIDITY, ELIMINATE ALLERGEN, BACTERIA AND OTHER VIRUS. THEY NOT ONLY REMOVE DUST PARTICLES & POLLENS BUT ALSO REMOVE PM 2.5 & PM 10

A CLEAN ENVIRONMENT IMPROVES PEOPLE'S SENSE OF WELLBEING AND REDUCES ANXIETY. WITH THE CULMINATION OF BOTH NATURAL AND MECHANIZED METHOD WE CAN ENSURE ABSOLUTELY CLEAN AND POLLUTION FREE AIR FOR OUR PRESENT AND FUTURE GENERATIONS. A MUST HAVE TO SURVIVE IN THESE TOXIC TIMES.



GULSHAN
Botnia
LIVING MADE BEAUTIFUL



STOCK IMAGE, INDICATIVE ONLY

SECURING YOUR PREMISES

AT GULSHAN BOTNIA, WE CONSISTENTLY MONITOR THE SOCIETY PREMISES TO ENSURE THAT YOU AND YOUR FAMILY STAY SAFE FROM CRIMES AND CRIMINALS. DILIGENTLY MONITORING ACTIVITIES AND VISITORS, WE OFFER 24/7 SUPPORT TO RESIDENTS WITH THE AID OF WORLD-CLASS SECURITY SYSTEMS AND CREDIBLE SECURITY PERSONNEL. AT BOTNIA, YOU CAN BE REST ASSURED THAT SUSPICIOUS VISITORS AND ACTIVITIES SHALL NOT GET A CHANCE TO DISTURB YOUR PEACE.



PERIMETER SECURITY



PROJECT LEVEL SECURITY



UNIT LEVEL SECURITY

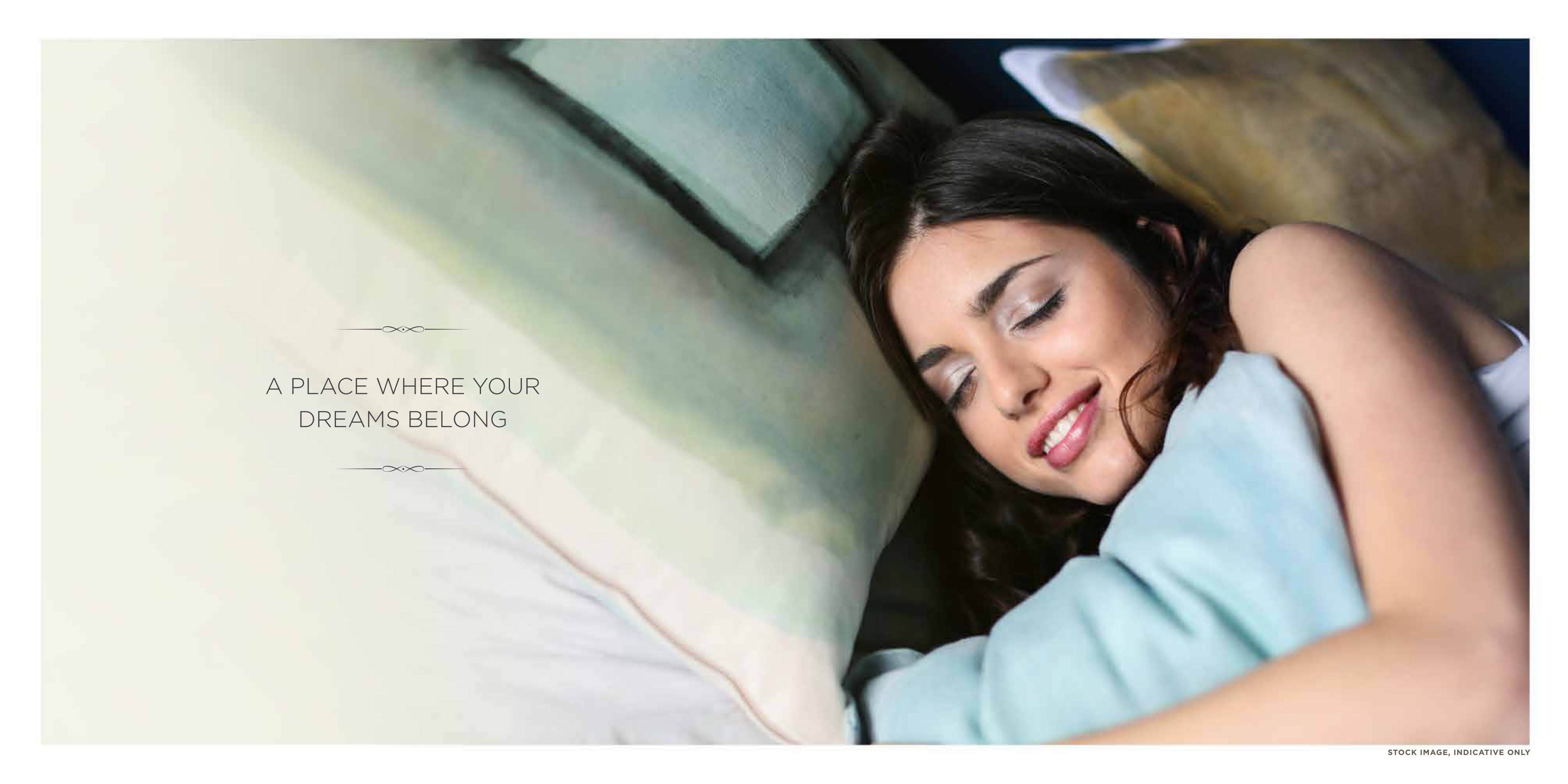


NEIGHBORHOOD SECURITY



CITY LEVEL SECURITY

STOCK IMAGE, INDICATIVE ONLY

A close-up photograph of a woman with long dark hair, wearing a light blue top, lying in bed. She is smiling slightly with her eyes closed, appearing to be in a peaceful sleep. The background shows a white pillow and a light blue blanket. The overall mood is serene and comfortable.

A PLACE WHERE YOUR
DREAMS BELONG



CONCIERGE SERVICES

COME, EXPERIENCE FIVE-STAR LUXURY AT GULSHAN BOTNIA. FROM TRAVEL AND TICKETS, HOLIDAY PACKAGES TO PASSPORT, PAN CARD, AND RTO SERVICES, REQUEST AND RECEIVE ALMOST ANYTHING FROM THE COMFORT OF YOUR HOME. OUR RELIABLE CONCIERGE SERVICES ARE HERE TO RESCUE YOU FROM TRAFFIC JAMS AND UNENDING QUEUES.



TRAVEL & TICKETS

- AIR TICKETS
- RAIL TICKETS
- BUS TICKETS
- CAB BOOKING



HOLIDAY PACKAGES

- LOCAL SIGHTSEEING
- WEEKEND GETAWAYS
- AMUSEMENT PARK TICKETS
- DOMESTIC/INTERNATIONAL
- HOLIDAY BOOKINGS



GOVERNMENT SERVICES

- PAN CARD
- RTO SERVICES
- PASSPORT SERVICES
- MUNICIPALITY SERVICES



COURIER & DELIVERY

- POSTAL SERVICES
- DOCUMENT DELIVERY
- FLOWER/GIFT/
- CAKE DELIVERY



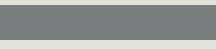
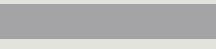

BILLING SERVICES



- WATER
- TELEPHONE
- ELECTRICITY



HOME FRONT

- CARPENTER & PLUMBING
- PEST CONTROL
- ELECTRICAL WORK
- LAUNDRY SERVICES
- PACKERS & MOVERS
- HOUSE CLEANING ASSISTANCE

APARTMENT CATEGORY	ACCOMMODATION	CARPET AREA	BALCONY AREA	TOTAL AREA	COLOUR CODE
TYPE A	2 BED + 2 TOILET	54.92 Sq.M / 591.17 Sq.Ft.	14.40 Sq.M / 155.04 Sq.Ft.	95.23 Sq.M / 1025 Sq.Ft.	
TYPE B	2 BED + 2 TOILET + STUDY	63.95 Sq.M / 688.39 Sq.Ft.	14.83 Sq.M / 159.66 Sq.Ft.	107.77 Sq.M / 1160 Sq.Ft.	
TYPE C	3 BED + 2 TOILET	76.07 Sq.M / 818.82 Sq.Ft.	16.61 Sq.M / 178.79 Sq.Ft.	125.88 Sq.M / 1355 Sq.Ft.	

APARTMENT CATEGORY	ACCOMMODATION	CARPET AREA	BALCONY AREA	TOTAL AREA	COLOUR CODE
TYPE D	3 BED + 2 TOILET	74.35 Sq.M / 800.27 Sq.Ft.	19.81 Sq.M / 213.23 Sq.Ft.	127.28 Sq.M / 1370 Sq.Ft.	
TYPE E	3 BED + 2 TOILET (BIG)	81.39 Sq.M / 876.11 Sq.Ft.	20.10 Sq.M / 216.35 Sq.Ft.	137.03 Sq.M / 1475 Sq.Ft.	



SITE LAYOUT

LEGEND

- | | |
|--|-------------------------------|
| 1 ENTRY/EXIT GATE | 9 JOGGING TRACK/PATHWAY |
| 2 ENTRANCE PLAZA | 10 OPEN AIR THEATRE |
| 3 RESIDENTIAL GATE | 11 PATHWAY THROUGH PORTALS |
| 4 TOWER DROP-OFF | 12 KIDS PLAY AREA |
| 5 SWIMMING POOL AT TERRACE
(ONE LEVEL ABOVE PODIUM) | 13 BADMINTON COURT (2 NOS.) |
| 6 POOL DECK | 14 PERIPHERAL SCREEN PLANTING |
| 7 COMMERCIAL APARTMENT PLAZA | 15 ORGANIC WASTE COMPOSTER |
| 8 COMMUNITY GREEN | 16 OPEN PARKING |

Disclaimer:

- 1) If required, minor additions or alterations can be done in the project satisfying RERA Act.
- 2) These are purely conceptual and constitute, not legal offerings.
- 3) Conversion factor: 1 Sq.M = 10.764 Sq.Ft. 1000 mm = 3.28 Ft

FLOOR PLAN

TYPE A

2 Bedrooms + 2 Toilets

	Sq.M	Sq.Ft.
Carpet Area (as per RERA)	54.92	591.17
Balcony Area	14.40	155.04
Total Area	95.22	1025



Disclaimer:

- 1) All rooms dimensions are in millimeters, 1 Sq.M = 10.764 Sq.Ft. | 1000 mm = 3.28 Ft.
- 2) Any minor additions or alterations if required in the project shall be done keeping in mind the provision of RERA.
- 3) The given measurements are brick to brick dimensions where the thickness of finishes are not considered.
- 4) Loose furniture, woodwork & appliances are shown for better understanding of the layout and are not part of the standard offering.
- 5) It is a typical unit. The units are mirrored/ rotated as per the tower location. Please contact the sales team for exact unit plan.

FLOOR PLAN

TYPE B

2 Bedrooms + 2 Toilets + Study

	Sq.M	Sq.Ft.
Carpet Area (as per RERA)	63.95	688.39
Balcony Area	14.83	159.66
Total Area	107.77	1160



Disclaimer:

- 1) All rooms dimensions are in millimeters, 1 Sq.M = 10.764 Sq.Ft. | 1000 mm = 3.28 Ft.
- 2) Any minor additions or alterations if required in the project shall be done keeping in mind the provision of RERA.
- 3) The given measurements are brick to brick dimensions where the thickness of finishes are not considered.
- 4) Loose furniture, woodwork & appliances are shown for better understanding of the layout and are not part of the standard offering.
- 5) It is a typical unit. The units are mirrored/ rotated as per the tower location. Please contact the sales team for exact unit plan.

FLOOR PLAN

TYPE C

3 Bedrooms + 2 Toilets

	Sq.M	Sq.Ft.
Carpet Area (as per RERA)	76.07	818.82
Balcony Area	16.61	178.79
Total Area	125.88	1355



Disclaimer:

- 1) All rooms dimensions are in millimeters, 1 Sq.M = 10.764 Sq.Ft. | 1000 mm = 3.28 Ft.
- 2) Any minor additions or alterations if required in the project shall be done keeping in mind the provision of RERA.
- 3) The given measurements are brick to brick dimensions where the thickness of finishes are not considered.
- 4) Loose furniture, woodwork & appliances are shown for better understanding of the layout and are not part of the standard offering.
- 5) It is a typical unit. The units are mirrored/ rotated as per the tower location. Please contact the sales team for exact unit plan.

FLOOR PLAN

TYPE D

3 Bedrooms + 2 Toilets

	Sq.M	Sq.Ft.
Carpet Area (as per RERA)	74.35	800.27
Balcony Area	19.81	213.23
Total Area	127.28	1370



Disclaimer:

- 1) All rooms dimensions are in millimeters, 1 Sq.M = 10.764 Sq.Ft. | 1000 mm = 3.28 Ft.
- 2) Any minor additions or alterations if required in the project shall be done keeping in mind the provision of RERA.
- 3) The given measurements are brick to brick dimensions where the thickness of finishes are not considered.
- 4) Loose furniture, woodwork & appliances are shown for better understanding of the layout and are not part of the standard offering.
- 5) It is a typical unit. The units are mirrored/ rotated as per the tower location. Please contact the sales team for exact unit plan.

FLOOR PLAN

TYPE E

3 Bedrooms + 2 Toilets (BIG)

	Sq.M	Sq.Ft.
Carpet Area (as per RERA)	81.39	876.11
Balcony Area	20.10	216.35
Total Area	137.03	1475



Disclaimer:

- 1) All rooms dimensions are in millimeters, 1 Sq.M = 10.764 Sq.Ft. | 1000 mm = 3.28 Ft.
- 2) Any minor additions or alterations if required in the project shall be done keeping in mind the provision of RERA.
- 3) The given measurements are brick to brick dimensions where the thickness of finishes are not considered.
- 4) Loose furniture, woodwork & appliances are shown for better understanding of the layout and are not part of the standard offering.
- 5) It is a typical unit. The units are mirrored/ rotated as per the tower location. Please contact the sales team for exact unit plan.

DELIVERED PROJECTS

Gulshan
HOMZ

GULSHAN IKEBANA

SECTOR 143 NOIDA

GULSHAN VIVANTE

SECTOR 137 NOIDA

HOMES 121

NOIDA

GRAND

INDIRAPURAM

GRANDSTREET

INDIRAPURAM

SHOPICK

INDIRAPURAM

EMERALD HEIGHTS

VAISHALI

CENTRUM

INDIRAPURAM

PROJECT SPECIFICATIONS

BUILDING ENVELOPE

THE BUILDING EXTERIOR IS PAINTED WITH SUPERIOR QUALITY PAINT FINISH. THE TONE OF THE COLOUR IS PLEASING FOR A DELIGHTFUL FACADE APPEARANCE.

THE RAILING ON BALCONIES ARE MADE OF M.S., MAKING AN ELEGANT VIEW OF THE FACADE.

THE CORNER TOWERS ARE HAVING A MAJESTIC ARCADE STRUCTURE GIVING A ROYAL FEEL TO THE FACADE.

FLOOR TO FLOOR HEIGHT

A DEDICATED GRAND ENTRANCE LOBBY FOR EACH TOWER IS HAVING ADDITIONAL HEIGHT FOR A FEELING OF SPACIOUSNESS.

THE LIFT FACADE IS AESTHETICALLY DONE WITH GOOD QUALITY TILES AND THE LIFT JAMB IS MADE OF GRANITE. FOR A FEEL OF SPACIOUSNESS IN EACH APARTMENT, THERE IS AMPLE AMOUNT OF CEILING TO FLOOR HEIGHT.

INTERIOR WALLS

ALL INTERIOR WALLS ARE HAVING OBD WALL FINISHED INTERIORS.

FLOORING

AESTHETICALLY APPEALING AND EXCELLENT QUALITY VITRIFIED TILES IN BEDROOMS /LIVING/ DINING ROOMS.

THE BALCONIES WILL BE FITTED WITH GOOD QUALITY CERAMIC TILES FOR AESTHETICS.

KITCHEN

CONSISTS OF AN ELEGANT KITCHEN COUNTER MADE OF GRANITE, FITTED WITH A DOUBLE BOWL STAINLESS STEEL SINK.

THE KITCHEN IS FINISHED WITH GOOD QUALITY GLAZED CERAMIC TILES 600MM ABOVE THE WORKING PLATFORM.

BATHROOMS

BATHROOM AREAS ARE FINISHED WITH EXCELLENT QUALITY CERAMIC TILES, UPTO THE DOOR HEIGHT LEVEL.

THE WC AND WASH BASIN ARE MADE OF GOOD QUALITY CERAMIC MATERIAL. ALL CP AND SANITARY FITMENTS ARE OF GOOD QUALITY SPECIFICATIONS.

PLUMBING

EXCELLENT QUALITY CPVC & UPVC PIPES FOR INTERNAL CONCEALED PIPING IN WET AREAS.

GOOD QUALITY UPVC PIPES BEING USED FOR DOWNCOMERS.

DOORS AND WINDOWS

A GRAND ENTRANCE DOOR OF 8FT HEIGHT HAVING INTERNAL HARDWOOD FRAME AND FLUSH DOOR.

AN ADDITIONAL M.S. SAFETY DOOR WITH WIRE MESH FOR IMPROVED SECURITY.

THE EXTERNAL DOORS AND WINDOWS ARE OF GOOD QUALITY UPVC MATERIAL.

ELECTRICALS

THE APARTMENT IS EFFICIENTLY DESIGNED FOR ADEQUATE ELECTRICAL POINTS IN EACH ROOM.

THERE IS ADDITIONAL PROVISION FOR TELEPHONE POINTS IN LIVING AND MASTER BEDROOM ALONG WITH PROVISION FOR TV POINTS IN LIVING ROOM AND ALL BEDROOMS.

THE SWITCHES FITTED ARE GOOD QUALITY MODULAR SWITCHES. BALCONIES ARE HAVING ROOF MOUNTED LIGHT PROVIDED.

POWER BACK UP

DG POWER BACKUP HAS BEEN PROVIDED FOR THE PROJECT. EACH APARTMENT HAS 1KVA OF POWER BACKUP.

IN CASE OF ADDITIONAL REQUIREMENT THE SAME CAN BE BOOKED WITH THE DEVELOPER AS PER AVAILABILITY AT AN ADDITIONAL COST.

SECURITY AND PEACE OF MIND

A MULTI TIER 24*7 SECURITY SYSTEM IS IN PLACE. THE MAIN ENTRANCE GATE IS EQUIPPED WITH CCTV CAMERAS. ALL CCTV CAMERAS ARE STRATEGICALLY LOCATED ACROSS THE PROJECT.

A PLANNED SECURITY SYSTEM HAS BEEN PUT IN PLACE FOR ENSURING ADEQUATE CHECKS FOR SAFETY OF ALL RESIDENTS. VIDEO DOOR PHONE IN EACH APARTMENT HAS BEEN PROVIDED FOR COMPLETE SECURITY.

PARKING

AMPLE PARKING SPACE AVAILABLE FOR THE RESIDENTS.



AWARDS

Gulshan HOMZ

MAGPIE ESTATE AWARD

FOR PROJECT OF
THE YEAR - NORTH ,
PROJECT - GULSHAN
IKEBANA,
2018

REALTY PLUS AWARD

FOR EXCELLENCE IN
DELIVERY, PROJECT
- GULSHAN IKEBANA,
2018

REALTY & MORE AWARD

FOR CSR DEVELOPER
OF THE YEAR,
2016

INDIA INTERNATIONAL PROPERTY AWARDS

REALTY PLUS CONCLAVE
& EXCELLENCE AWARDS,
2015

REALTY PLUS EXCELLENCE AWARDS

FOR GULSHAN VIVANTE AS
THE LUXURY PROJECT
OF THE YEAR,
2014

ESTATE AVENUE AWARD

FOR GULSHAN IKEBANA
AS MOST PROMISING
PROJECTS OF
NORTH INDIA,
2014

CNBC AWAAZ REAL ESTATE AWARDS

PROJECT: GRAND
INDRAPURAM
UNDER LUXURY
SEGMENT, 2013

ESTATE WORLD AWARD

FOR "BEST LUXURY
PREMIUM HOUSING
DEVELOPER - NORTH,
2013



Thank you very much for your kind support and assistance. The handover team has been really helpful, specially Ram Naresh ji and Chandan ji, They were always smiling to solve the issues. Looking forward for such support and help in future as well.

RJ RAUNAC
RESIDENT | GULSHAN IKEBANA



Very Nice team Handover process was very efficient and the amount of dedication shown by you guys beyond the call of duty is very amazing. Keep up the good show.



All staff members at project site as well as at corporate office have been courteous and have been trained well to behave with the customers.

Handing over process was very smooth and all process were explained very well.

Overall experience has been good and I have been recommending this company/ project for investment to lot of people known to me and two people have already purchased flats on my recommendation.



It was a good experience with Gulshan group. All the staffs are good and cooperative in the group. It is a very amazing project. I really enjoy. It's very good. Overall it is like dream house. Thank you so much. Best among all.



It was a very pleasant experience staff was very polite, they answered all our queries.

Really appreciate the staff, society maintenance is very neat and clean. Thanks
Rohit Garg & Purshottam Kumar Garg



Had a very good experience. Good and generous people. All are helpful and disciplined. Very nice society. We wish the same kind of generosity persist in the time to come also. Thank you very much.



Hello,
Everthing is excellent. The Staff attended very nicely & very sincerely, Friendly staff. We were thinking to give the flat on rent but after taking possession today, we dropped the idea of rental basis. We are planning to shift as soon as possible. Our children will enjoy more here, just fingers crossed. God bless and keep it up.



The handover experience has been really very good. The process has been seamlessly designed keeping in mind the "customer first" policy. The Staff was very courteous. The upkeepment of the society is visibly very clean & pleasant. I hope the same is maintained over the years.

With Good wishes.

Manpreet Kaur.



Very nicely maintained premises. Courteous and friendly staff. They co-operated and explained everything. Keep it up.



It has been a wonderful experience dealing with handover office, Mr. Ram Naresh is truly a very efficient person. He kept his promises and delivered on slightly delayed schedule. However, the delay is offset by the professionalism demonstrated and getting our flat in order with good quality. Mishra Ji is also a very good person as he understood the issues and resolved them to our satisfaction. We want to thank everyone for their contribution in getting us to this stage of taking the handover.



I appreciate the work culture/ethics of Gulshan Homz for the following reasons.
Timely delivery of commitment.
Disciplined and committed officers
Facilitative environment in all offices like marketing office, site maintenance office as well as HO.
Very quick response for any issues. An entirely beautiful world inside Gulshan Ikebana premises.
Best wishes & regards
Sushil Kumar



We had a wonderful experience with Gulshan Homz. We are very happy to get our flat handed over on time. The finishing work is very good. Looking forward to a great experience of living here. Staff is very helpful and polite. You are doing a fantastic work in terms of customer satisfaction at times when people are afraid of frauds done by other builder. We can say without any doubt that Gulshan Homz can be trusted without any second thought when it comes to timely delivery of home. Keep up the good work.
Mandeep & Shital

