

RERA REGISTRATION NO. : RC/REP/HARERA/GGM/462/194/2021/30  
RC/REP/HARERA/GGM/462/194/2021/31  
(www.haryanarera.gov.in)

# ASCEND TO THE **SIGNATURE** LIFE



AN ISO 9001:2015; 14001:2015; 45001:2018 CERTIFIED COMPANY

SIGNATUREGLOBAL DEVELOPERS PRIVATE LIMITED | CIN NO. : U70109DL2012PTC241901

REGD. OFFICE: 13TH FLOOR, 28 BARAKHAMBA, ROAD, CONNAUGHT PLACE, NEW DELHI - 110001

CORP. OFFICE: GROUND FLOOR, TOWER-A, SIGNATURE TOWER, SOUTH CITY-1, GURUGRAM, HARYANA- 122001

[www.signatureglobal.in](http://www.signatureglobal.in)

DISCLAIMER :

PROMOTER URGES EVERY APPLICANT TO INSPECT THE PROJECT SITE AND SHALL NOT MERELY RELY UPON OR TO BE INFLUENCED BY ANY ARCHITECTURAL IMPRESSION, PLAN OR SALES BROCHURE AND, THEREFORE, REQUESTED TO MAKE PERSONAL JUDGMENT PRIOR TO SUBMITTING AN APPLICATION FOR ALLOTMENT. THE PROJECT IS BEING DEVELOPED IN PHASES, HENCE, CERTAIN FACILITIES/AMENITIES ETC. MAY BE USED BY ALLOTTEE OF OTHER PHASES. UNLESS OTHERWISE STATED, ALL THE IMAGES, VISUALS, MATERIALS AND INFORMATION CONTAINED HEREIN ARE PURELY CREATIVE/ARTISTIC AND MAY NOT BE ACTUAL REPRESENTATIONS OF THE PRODUCTS AND/OR ANY AMENITIES. FURTHER, THE ACTUAL DESIGN MAY VARY IN THE FIT AND FINISHED FORM THE ONE DISPLAYED ABOVE. PROJECT DETAILS / SPECIFICATIONS CAN ALSO BE ACCESSED AT THE OFFICE OF HARYANA REAL ESTATE REGULATORY AUTHORITY WEBSITE [HTTPS://HARYANARERA.GOV.IN/](https://haryanarera.gov.in/). JOURNEY TIME SHOWN, IF ANY, IS BASED UPON GOOGLE MAPS, WHICH MAY VARY AS PER THE TRAFFIC AT A RELEVANT POINT OF TIME.

RATES MENTIONED DO NOT INCLUDE GST AND OTHER STATUTORY CHARGES, IF APPLICABLE. T & C APPLY. 1 SQ. MTR. = 10.7639 SQ. FT.

FOR ANY QUERY PLEASE SPEAK TO OUR CUSTOMER RELATIONSHIP MANAGER

DESIGNED BY PADMA BHUSHAN ARCHITECT HAFEEZ CONTRACTOR

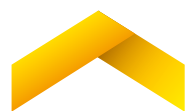




 **SIGNATURE  
GLOBAL CITY 37D™**  
SECTOR 37D GURUGRAM

Rediscover a good lifestyle in 20.5890 acres of happiness; enjoy a well-connected life with proximity to major highways. Signature Global City 37D is designed with a neo classical façade architectural theme to provide you with an upscale, urban ambience. Also, Vastu compliant prayer rooms help to harness the positive energy; creating an ambience of domestic bliss.

What's more, the project comes with a club for all the residents of the society with state-of-the-art interior, games and gym for a healthy life. To make your life comfortable and hassle-free here, world class amenities are provided along with high-end security and a private service area for your visitors.









# LOCATION MAP

## HOSPITALS

- A** Shri Balaji Hospital and Trauma Center
- B** Signature Hospital
- C** Yadav Hospital
- D** Aarvy Hospital

## CONNECTIVITY

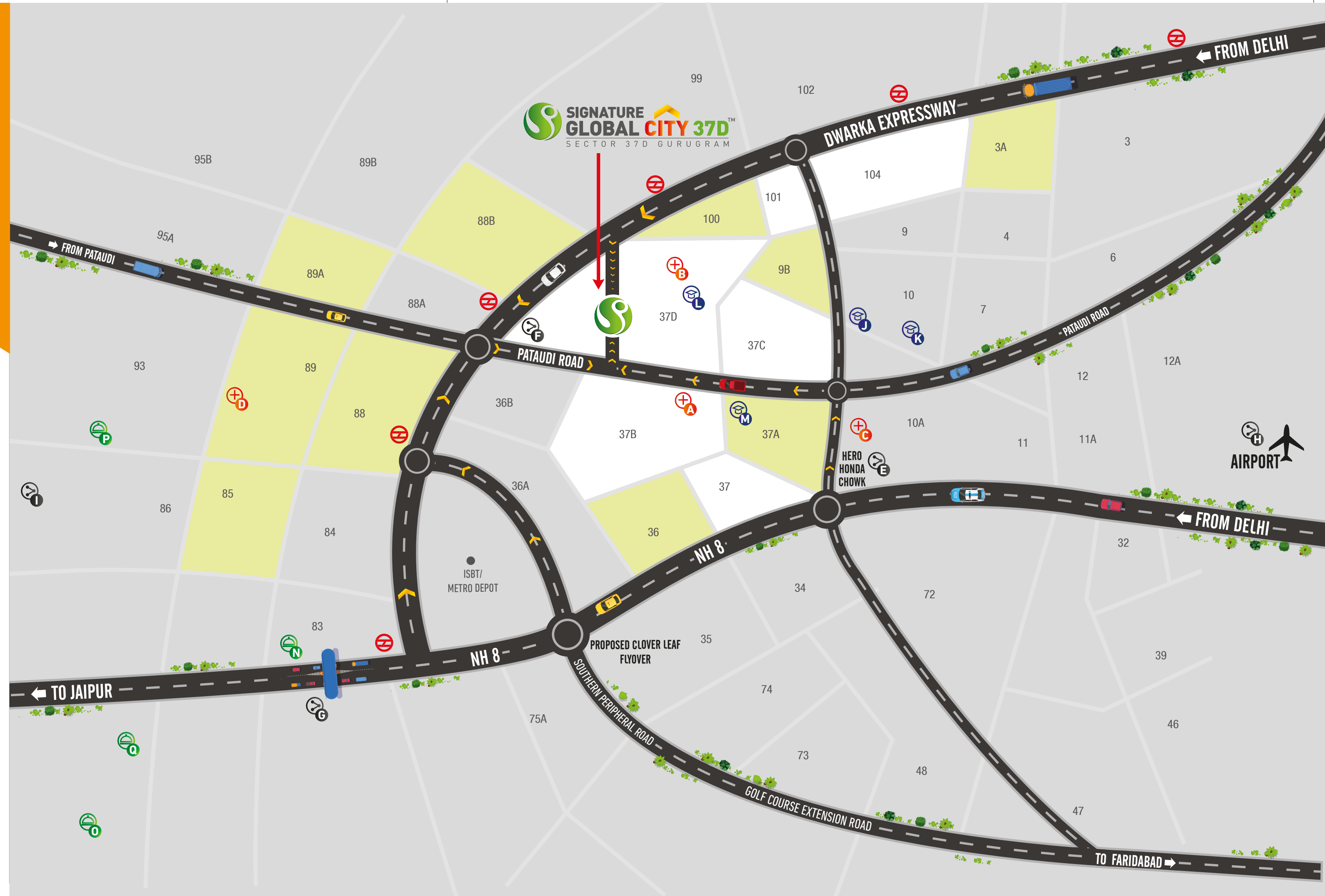
- E** Hero Honda Chowk
- F** Dwarka Expressway
- G** Kherki Daula Toll, NH-8
- H** Airport
- I** IMT Manesar

## SCHOOLS

- J** Alpine Convent School
- K** Blue Bells Public School
- L** Dream School
- M** CHSP Public School

## HOTELS

- N** Hyatt Regency
- O** ITC Grand Bharat
- P** Holiday Inn
- Q** Karma Lakelands







## GREAT FEATURES AROUND THE PROJECT

- Sector 37D enjoys its proximity to key employment hubs of the city like Cyber City, Golf Course, Sohna, Manesar, etc. Major corporate hubs of the city are at a driving distance.
- Major industrial employment centre of Manesar is in close proximity.
- Kadipur Industrial Area is in close vicinity.
- Moreover, there is easy connectivity to the city's employment hubs through Pataudi Road, NH8, Dwarka Expressway and Southern Peripheral Road. Another point about this sector which makes it an ideal residential destination is strong social infrastructure in the neighbourhood.
- The sector has witnessed development of several residential projects in the vicinity.
- Residential projects in these places are ideal for those who choose to surround themselves by abundant greenery with the soothing sound of nature.
- Well established network of Schools, Hospitals, Shopping Malls, Retail Markets and Five Star Hotels.
- The sector has witnessed good returns in terms of rent because it has an ideal location for the people who are always on the move and work in the private and retail sectors.
- The city has a great connectivity with the international airport via Dwarka Expressway.







SIGNATURE GLOBAL CITY 37D

PLAZA 37D  
RETAIL HUB

  
**ENJOY  
AN URBAN LIFESTYLE,  
IN THE LAP OF NATURE.**





**WALK UP  
THE PATH TO AN  
UPSCALE LIFE.**





**BIG ON SPACE,  
FOR FUN AND GAMES.**





**CONNECT WITH  
BESPOKE ENTERTAINMENT.**





  
**TAKE A  
DIP IN LUXURY.**

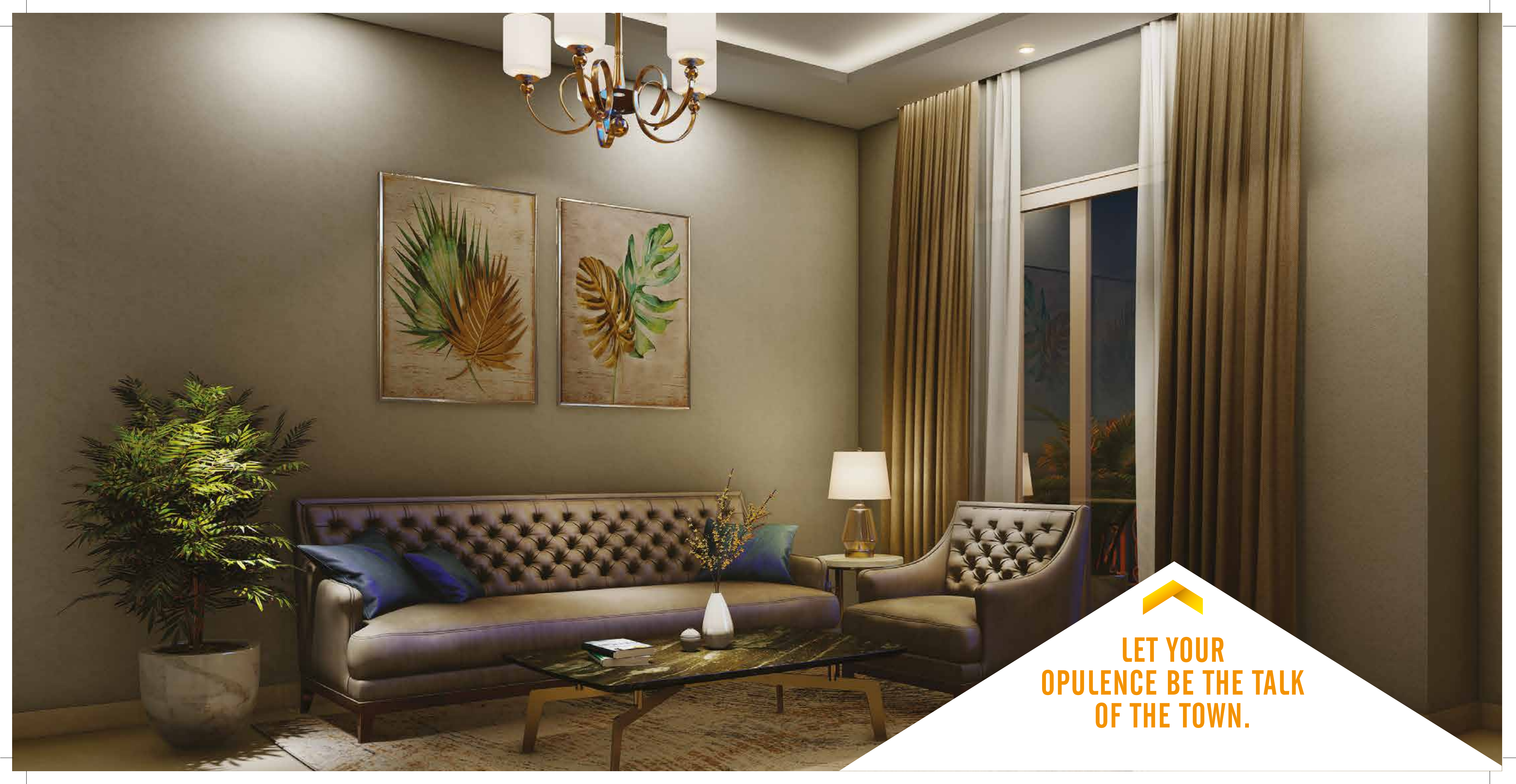




THE CLUB

**CONNECT WITH LIFE.  
LIVE IN THE LAP OF LUXURY.**





**LET YOUR  
OPULENCE BE THE TALK  
OF THE TOWN.**



# AMENITIES



DEDICATED LIFTS  
FOR STILT+ 4 FLOORS



DEDICATED  
CAR PARKING



OUTDOOR GYM



JOGGING TRACK



OPEN-AIR  
AMPHITHEATRE



SKATING RINK



BUTTERFLY  
GARDEN



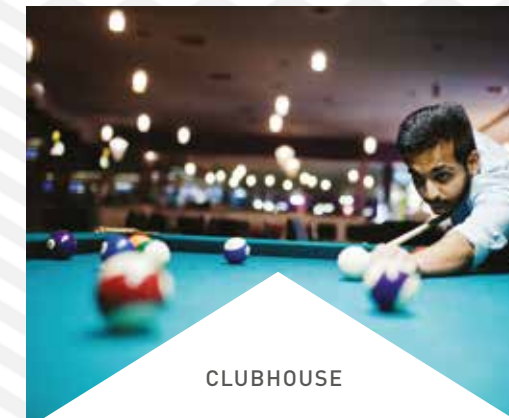
MULTIPURPOSE  
LAWN



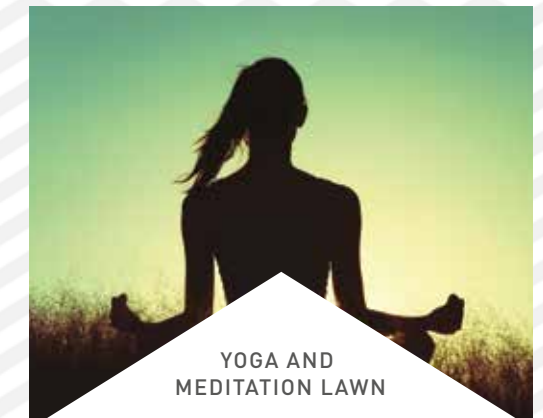
BADMINTON  
COURT



SWIMMING POOL



CLUBHOUSE



YOGA AND  
MEDITATION LAWN



HALF BASKETBALL  
COURT



TODDLERS'  
PLAY AREA



PET'S AREA



CRICKET NET





# SPECIAL FEATURES



MODULAR KITCHEN



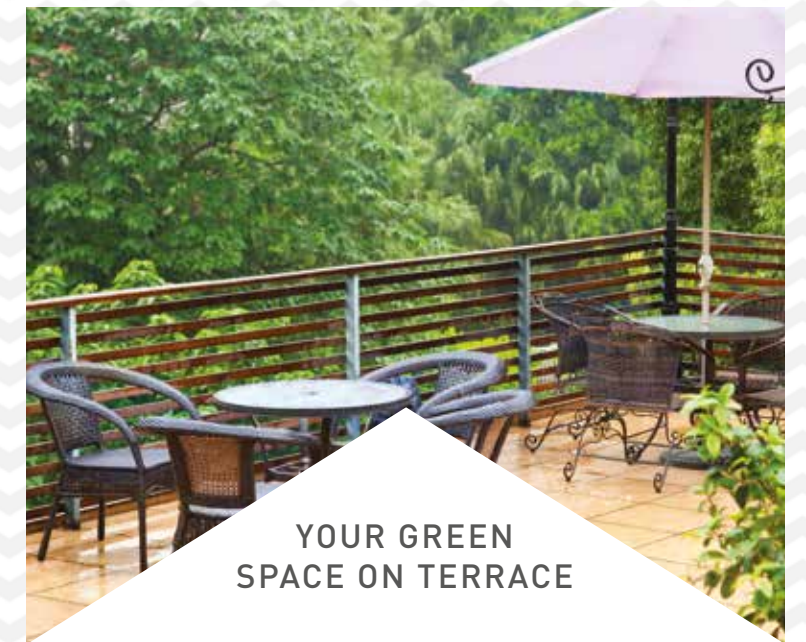
AIR-CONDITIONED  
HOME OFFICE WITH  
WAITING LOBBY



FULLY  
AIR-CONDITIONED  
PREMIUM FLOOR



PRIVATE  
SERVICE AREA



YOUR GREEN  
SPACE ON TERRACE















# AMENITIES

- 01 ENTRY AVENUE
- 19 OUTDOOR GYM
- 02 ADULT'S SWIMMING POOL
- 20 REFLEXOLOGY PATH/GARDEN
- 03 KID'S POOL
- 21 PET'S PARK
- 04 JACUZZI
- 22 TRELIS SEATING
- 05 POOL DECK WITH CABANNA
- 23 STROLLING PATH
- 06 KID'S PLAY AREA
- 24 CAMP FIRE
- 07 TODDLERS' PLAY AREA
- 25 SENIOR CITIZEN AREA
- 08 TREE HOUSE
- 09 NATURE EXPLORATION AREA
- 10 FOREST CAMPING AREA
- 11 BUTTERFLY GARDEN
- 12 YOGA/MEDITATION LAWN
- 13 JOGGING TRACK
- 14 BADMINTON COURT
- 15 BOX CRICKET
- 16 BASKET BALL COURT
- 17 SKATING RINK
- 18 AMPHITHEATRE

## HARD LANDSCAPE LEGEND DESCRIPTION

 ROADSIDE PATHWAY	 WATER FEATURE FINISHED IN PORCELAIN TILES
 PATHWAY	 SYNTHETIC SURFACE FOR KID'S PLAY
 JOGGING TRACK	 ENTRY/EXIT






## SOFT LANDSCAPE LEGEND DESCRIPTION

 LAWN	 FOLIAGE TREES
 PLANTING BEDS	 ORNAMENTAL TREES

# SITE PLAN



### LEGEND OF BLOCKS

	BLOCK - ROSE
	BLOCK - LOTUS
	BLOCK - JASMINE
	BLOCK - ZINNIA
	BLOCK - TULIP



# BLOCK NUMBERING PLAN

Sr. No.	BLOCK TYPE	PLOT NO.	PLOT TYPE AS PER ZONING	PLOT NO. AS PER ZONING	FROZEN / UNFORZENN
1	ROSE	R01	A	A1	FROZEN
2	ROSE	R02	A	A2	FROZEN
3	ROSE	R03	A	A3	FROZEN
4	ROSE	R04	A	A4	FROZEN
5	ROSE	R05	A	A5	FROZEN
6	ROSE	R06	A	A6	FROZEN
7	ROSE	R07	A	A7	FROZEN
8	ROSE	R08	A	A8	FROZEN
9	ROSE	R09	A	A9	FROZEN
10	ROSE	R10	A	A10	FROZEN
11	ROSE	R11	A	A11	FROZEN
12	ROSE	R12	A	A12	FROZEN
13	ROSE	R13	A	A13	FROZEN
14	ROSE	R14	A	A14	FROZEN
15	ROSE	R15	A	A15	FROZEN
16	ROSE	R16	C	C37	FROZEN
17	ROSE	R17	C	C36	FROZEN
18	ROSE	R18	C	C35	FROZEN
19	ROSE	R19	C	C34	FROZEN
20	ROSE	R20	C	C33	FROZEN
21	ROSE	R21	B	B73	FROZEN
22	ROSE	R22	B	B74	FROZEN
23	ROSE	R23	B	B75	FROZEN
24	ROSE	R24	B	B76	FROZEN
25	ROSE	R25	B	B77	FROZEN
26	ROSE	R26	B	B78	FROZEN
27	ROSE	R27	B	B79	FROZEN
28	ROSE	R28	B	B80	FROZEN
29	ROSE	R29	B	B81	FROZEN
30	ROSE	R30	B	B82	FROZEN
31	ROSE	R31	B	B83	FROZEN
32	ROSE	R32	B	B84	FROZEN
33	ROSE	R33	B	B85	FROZEN
34	ROSE	R34	B	B86	FROZEN
35	ROSE	R35	C	C32	FROZEN
36	ROSE	R36	C	C31	FROZEN
37	ROSE	R37	C	C30	FROZEN
38	ROSE	R38	M16	M16	FROZEN
39	ROSE	R39	M15	M15	FROZEN
40	ROSE	R40	M14	M14	FROZEN
41	ROSE	R41	M13	M13	FROZEN

Sr. No.	BLOCK TYPE	PLOT NO.	PLOT TYPE AS PER ZONING	PLOT NO. AS PER ZONING	FROZEN / UNFORZENN
42	ROSE	R42	M12	M12	FROZEN
43	ROSE	R43	M11	M11	FROZEN
44	ROSE	R44	C	C38	FROZEN
45	ROSE	R45	C	C39	FROZEN
46	ROSE	R46	C	C40	FROZEN
47	ROSE	R47	C	C41	FROZEN
48	ROSE	R48	C	C42	FROZEN
49	ROSE	R49	C	C43	FROZEN
50	ROSE	R50	C	C55	FROZEN
51	ROSE	R51	C	C56	FROZEN
52	ROSE	R52	C	C57	FROZEN
53	ROSE	R53	C	C58	FROZEN
54	ROSE	R54	C	C59	FROZEN
55	ROSE	R55	C	C60	FROZEN
56	ROSE	R56	C	C61	FROZEN
57	ROSE	R57	C	C62	FROZEN
58	ROSE	R58	C	C63	FROZEN
59	ROSE	R59	C	C64	FROZEN
60	ROSE	R60	C	C65	FROZEN
61	ROSE	R61	C	C44	FROZEN
62	ROSE	R62	C	C45	FROZEN
63	ROSE	R63	C	C46	FROZEN
64	ROSE	R64	C	C47	FROZEN
65	ROSE	R65	C	C48	FROZEN
66	ROSE	R66	C	C49	FROZEN
67	ROSE	R67	C	C50	FROZEN
68	ROSE	R68	C	C51	FROZEN
69	ROSE	R69	C	C52	FROZEN
70	ROSE	R70	C	C53	FROZEN
71	ROSE	R71	C	C54	FROZEN
72	ROSE	R72	B	B107	FROZEN
73	ROSE	R73	B	B106	FROZEN
74	ROSE	R74	B	B105	FROZEN
75	ROSE	R75	B	B104	FROZEN
76	ROSE	R76	B	B87	FROZEN
77	ROSE	R77	B	B88	FROZEN
78	ROSE	R78	B	B89	FROZEN
79	ROSE	R79	B	B90	FROZEN
80	ROSE	R80	B	B91	FROZEN
81	ROSE	R81	B	B92	FROZEN
82	ROSE	R82	B	B93	FROZEN

Sr. No.	BLOCK TYPE	PLOT NO.	PLOT TYPE AS PER ZONING	PLOT NO. AS PER ZONING	FROZEN / UNFORZENN
83	ROSE	R83	B	B94	FROZEN
84	ROSE	R84	B	B95	FROZEN
85	ROSE	R85	B	B96	FROZEN
86	ROSE	R86	B	B97	FROZEN
87	ROSE	R87	B	B98	FROZEN
88	ROSE	R88	B	B99	FROZEN
89	ROSE	R89	B	B100	FROZEN
90	ROSE	R90	B	B101	FROZEN
91	ROSE	R91	B	B102	FROZEN
92	ROSE	R92	B	B103	FROZEN
93	LOTUS	L1	A	A26	UNFROZEN
94	LOTUS	L2	A	A27	UNFROZEN
95	LOTUS	L3	A	A28	UNFROZEN
96	LOTUS	L4	A	A29	UNFROZEN
97	LOTUS	L5	A	A30	UNFROZEN
98	LOTUS	L6	A	A31	UNFROZEN
99	LOTUS	L7	A	A32	UNFROZEN
100	LOTUS	L8	A	A33	UNFROZEN
101	LOTUS	L9	A	A34	UNFROZEN
102	LOTUS	L10	A	A35	UNFROZEN
103	LOTUS	L11	A	A36	UNFROZEN
104	LOTUS	L12	A	A37	UNFROZEN
105	LOTUS	L13	A	A38	UNFROZEN
106	LOTUS	L14	A	A39	UNFROZEN
107	LOTUS	L15	A	A40	UNFROZEN
108	LOTUS	L16	M7	M7	FROZEN
109	LOTUS	L17	A	A41	FROZEN
110	LOTUS	L18	A	A42	FROZEN
111	LOTUS	L19	A	A43	FROZEN
112	LOTUS	L20	A	A44	FROZEN
113	LOTUS	L21	A	A45	FROZEN
114	LOTUS	L22	A	A46	FROZEN
115	LOTUS	L23	A	A47	FROZEN
116	LOTUS	L24	A	A48	FROZEN
117	LOTUS	L25	A	A49	FROZEN
118	LOTUS	L26	B	B1	UNFROZEN
119	LOTUS	L27	B	B2	UNFROZEN
120	LOTUS	L28	B	B3	UNFROZEN
121	LOTUS	L29	B	B4	UNFROZEN
122	LOTUS	L30	B	B5	UNFROZEN
123	LOTUS	L31	B	B6	UNFROZEN

Sr. No.	BLOCK TYPE	PLOT NO.	PLOT TYPE AS PER ZONING	PLOT NO. AS PER ZONING	FROZEN / UNFORZENN
124	LOTUS	L32	C	C12	UNFROZEN
125	LOTUS	L33	C	C13	UNFROZEN
126	LOTUS	L34	C	C14	UNFROZEN
127	LOTUS	L35	C	C15	UNFROZEN
128	LOTUS	L36	C	C16	UNFROZEN
129	LOTUS	L37	C	C17	UNFROZEN
130	LOTUS	L38	C	C18	UNFROZEN
131	LOTUS	L39	C	C19	UNFROZEN
132	LOTUS	L40	C	C20	UNFROZEN
133	LOTUS	L41	C	C21	UNFROZEN
134	LOTUS	L42	C	C11	FROZEN
135	LOTUS	L43	C	C10	FROZEN
136	LOTUS	L44	C	C9	FROZEN
137	LOTUS	L45	C	C8	FROZEN
138	LOTUS	L46	C	C7	FROZEN
139	LOTUS	L47	C	C6	FROZEN
140	LOTUS	L48	C	C5	FROZEN
141	LOTUS	L49	C	C4	FROZEN
142	LOTUS	L50	C	C3	FROZEN
143	LOTUS	L51	M6	M6	FROZEN
144	LOTUS	L52	M5	M5	FROZEN
145	LOTUS	L53	M4	M4	FROZEN
146	LOTUS	L54	M3	M3	FROZEN
147	LOTUS	L55	M2	M2	FROZEN
148	LOTUS	L56	M1	M1	FROZEN
149	LOTUS	L57	A	A25	FROZEN
150	LOTUS	L58	A	A24	FROZEN
151	LOTUS	L59	A	A23	FROZEN
152	LOTUS	L60	A	A22	FROZEN
153	LOTUS	L61	A	A21	FROZEN
154	LOTUS	L62	A	A20	FROZEN
155	LOTUS	L63	A	A19	FROZEN
156	LOTUS	L64	A	A18	FROZEN
157	LOTUS	L65	A	A17	FROZEN
158	LOTUS	L66	A	A16	FROZEN
159	LOTUS	L67	C	C2	FROZEN
160	LOTUS	L68	C	C1	FROZEN
161	JASMINE	J1	B	B7	UNFROZEN
162	JASMINE	J2	B	B8	UNFROZEN
163	JASMINE	J3	B	B9	UNFROZEN
164	JASMINE	J4	B	B10	UNFROZEN



**BLOCK  
NUMBERING  
PLAN**

Sr. No.	BLOCK TYPE	PLOT NO.	PLOT TYPE AS PER ZONING	PLOT NO. AS PER ZONING	FROZEN / UNFORZENN
165	JASMINE	J5	B	B11	UNFROZEN
166	JASMINE	J6	B	B12	UNFROZEN
167	JASMINE	J7	B	B13	UNFROZEN
168	JASMINE	J8	B	B14	UNFROZEN
169	JASMINE	J9	B	B15	UNFROZEN
170	JASMINE	J10	B	B16	UNFROZEN
171	JASMINE	J11	B	B17	UNFROZEN
172	JASMINE	J12	B	B47	FROZEN
173	JASMINE	J13	B	B46	FROZEN
174	JASMINE	J14	B	B45	FROZEN
175	JASMINE	J15	B	B44	FROZEN
176	JASMINE	J16	B	B43	FROZEN
177	JASMINE	J17	B	B42	FROZEN
178	JASMINE	J18	B	B41	FROZEN
179	JASMINE	J19	B	B40	FROZEN
180	JASMINE	J20	B	B39	FROZEN
181	JASMINE	J21	B	B38	FROZEN
182	JASMINE	J22	B	B37	FROZEN
183	JASMINE	J23	C	C22	FROZEN
184	JASMINE	J24	C	C23	FROZEN
185	JASMINE	J25	C	C24	FROZEN
186	JASMINE	J26	C	C25	FROZEN
187	JASMINE	J27	A	A52	FROZEN
188	JASMINE	J28	A	A51	FROZEN
189	JASMINE	J29	A	A50	FROZEN
190	JASMINE	J30	B	B48	UNFROZEN
191	JASMINE	J31	B	B49	UNFROZEN
192	JASMINE	J32	B	B50	UNFROZEN
193	JASMINE	J33	B	B51	UNFROZEN
194	JASMINE	J34	B	B52	UNFROZEN
195	JASMINE	J35	B	B53	UNFROZEN
196	JASMINE	J36	B	B54	UNFROZEN
197	JASMINE	J37	B	B55	UNFROZEN
198	JASMINE	J38	B	B56	UNFROZEN
199	JASMINE	J39	B	B28	UNFROZEN
200	JASMINE	J40	B	B29	UNFROZEN
201	JASMINE	J41	B	B30	UNFROZEN
202	JASMINE	J42	B	B31	UNFROZEN
203	JASMINE	J43	B	B32	UNFROZEN
204	JASMINE	J44	B	B33	UNFROZEN
205	JASMINE	J45	B	B34	UNFROZEN

Sr. No.	BLOCK TYPE	PLOT NO.	PLOT TYPE AS PER ZONING	PLOT NO. AS PER ZONING	FROZEN / UNFORZENN
206	JASMINE	J46	B	B35	UNFROZEN
207	JASMINE	J47	B	B36	UNFROZEN
208	JASMINE	J48	M8	M8	FROZEN
209	JASMINE	J49	B	B18	UNFROZEN
210	JASMINE	J50	B	B19	UNFROZEN
211	JASMINE	J51	B	B20	UNFROZEN
212	JASMINE	J52	B	B21	UNFROZEN
213	JASMINE	J53	B	B22	UNFROZEN
214	JASMINE	J54	B	B23	UNFROZEN
215	JASMINE	J55	B	B24	UNFROZEN
216	JASMINE	J56	B	B25	UNFROZEN
217	JASMINE	J57	B	B26	UNFROZEN
218	JASMINE	J58	B	B27	UNFROZEN
219	JASMINE	J59	B	B72	UNFROZEN
220	JASMINE	J60	B	B71	UNFROZEN
221	JASMINE	J61	B	B70	UNFROZEN
222	JASMINE	J62	B	B69	UNFROZEN
223	JASMINE	J63	B	B68	UNFROZEN
224	JASMINE	J64	B	B67	UNFROZEN
225	JASMINE	J65	B	B66	UNFROZEN
226	JASMINE	J66	B	B65	UNFROZEN
227	JASMINE	J67	B	B64	UNFROZEN
228	JASMINE	J68	B	B63	UNFROZEN
229	JASMINE	J69	B	B62	UNFROZEN
230	JASMINE	J70	B	B61	UNFROZEN
231	JASMINE	J71	B	B60	UNFROZEN
232	JASMINE	J72	B	B59	UNFROZEN
233	JASMINE	J73	B	B58	UNFROZEN
234	JASMINE	J74	B	B57	UNFROZEN
235	ZINNIA	Z1	B	B132	FROZEN
236	ZINNIA	Z2	B	B133	FROZEN
237	ZINNIA	Z3	B	B134	FROZEN
238	ZINNIA	Z4	B	B135	FROZEN
239	ZINNIA	Z5	B	B136	FROZEN
240	ZINNIA	Z6	B	B141	FROZEN
241	ZINNIA	Z7	B	B140	FROZEN
242	ZINNIA	Z8	B	B139	FROZEN
243	ZINNIA	Z9	B	B138	FROZEN
244	ZINNIA	Z10	B	B137	FROZEN
245	ZINNIA	Z11	M9	M9	FROZEN
246	ZINNIA	Z12	B	B142	FROZEN

Sr. No.	BLOCK TYPE	PLOT NO.	PLOT TYPE AS PER ZONING	PLOT NO. AS PER ZONING	FROZEN / UNFORZENN
247	ZINNIA	Z13	B	B143	FROZEN
248	ZINNIA	Z14	B	B144	FROZEN
249	ZINNIA	Z15	B	B145	FROZEN
250	ZINNIA	Z16	B	B149	UNFROZEN
251	ZINNIA	Z17	B	B148	UNFROZEN
252	ZINNIA	Z18	B	B147	UNFROZEN
253	ZINNIA	Z19	B	B146	UNFROZEN
254	ZINNIA	Z20	B	B150	UNFROZEN
255	ZINNIA	Z21	B	B151	UNFROZEN
256	ZINNIA	Z22	B	B152	UNFROZEN
257	ZINNIA	Z23	B	B153	UNFROZEN
258	ZINNIA	Z24	B	B157	UNFROZEN
259	ZINNIA	Z25	B	B156	UNFROZEN
260	ZINNIA	Z26	B	B155	UNFROZEN
261	ZINNIA	Z27	B	B154	UNFROZEN
262	ZINNIA	Z28	C	C29	UNFROZEN
263	ZINNIA	Z29	C	C28	UNFROZEN
264	ZINNIA	Z30	C	C27	UNFROZEN
265	ZINNIA	Z31	C	C26	UNFROZEN
266	ZINNIA	Z32	A	A59	UNFROZEN
267	ZINNIA	Z33	A	A58	UNFROZEN
268	ZINNIA	Z34	A	A57	UNFROZEN
269	ZINNIA	Z35	A	A56	UNFROZEN
270	ZINNIA	Z36	A	A55	UNFROZEN
271	ZINNIA	Z37	A	A54	UNFROZEN
272	ZINNIA	Z38	A	A53	UNFROZEN
273	TULIP	T1	B	B108	FROZEN
274	TULIP	T2	B	B109	FROZEN
275	TULIP	T3	B	B110	UNFROZEN
276	TULIP	T4	B	B111	UNFROZEN
277	TULIP	T5	B	B112	UNFROZEN
278	TULIP	T6	B	B113	UNFROZEN
279	TULIP	T7	B	B114	UNFROZEN
280	TULIP	T8	B	B115	UNFROZEN
281	TULIP	T9	B	B116	UNFROZEN
282	TULIP	T10	B	B117	UNFROZEN
283	TULIP	T11	C	C79	UNFROZEN
284	TULIP	T12	C	C80	UNFROZEN
285	TULIP	T13	B	B118	UNFROZEN
286	TULIP	T14	B	B119	UNFROZEN
287	TULIP	T15	B	B120	UNFROZEN

Sr. No.	BLOCK TYPE	PLOT NO.	PLOT TYPE AS PER ZONING	PLOT NO. AS PER ZONING	FROZEN / UNFORZENN
288	TULIP	T16	B	B121	UNFROZEN
289	TULIP	T17	B	B122	UNFROZEN
290	TULIP	T18	B	B123	UNFROZEN
291	TULIP	T19	B	B124	UNFROZEN
292	TULIP	T20	B	B125	UNFROZEN
293	TULIP	T21	B	B126	UNFROZEN
294	TULIP	T22	B	B127	UNFROZEN
295	TULIP	T23	B	B128	UNFROZEN
296	TULIP	T24	B	B129	UNFROZEN
297	TULIP	T25	B	B130	UNFROZEN
298	TULIP	T26	B	B131	UNFROZEN
299	TULIP	T27	C	C92	UNFROZEN
300	TULIP	T28	C	C91	UNFROZEN
301	TULIP	T29	C	C90	UNFROZEN
302	TULIP	T30	C	C89	UNFROZEN
303	TULIP	T31	C	C88	UNFROZEN
304	TULIP	T32	C	C87	UNFROZEN
305	TULIP	T33	C	C86	UNFROZEN
306	TULIP	T34	C	C85	UNFROZEN
307	TULIP	T35	C	C84	UNFROZEN
308	TULIP	T36	C	C83	UNFROZEN
309	TULIP	T37	C	C82	UNFROZEN
310	TULIP	T38	C	C81	UNFROZEN
311	TULIP	T39	M10	M10	FROZEN
312	TULIP	T40	C	C78	UNFROZEN
313	TULIP	T41	C	C77	UNFROZEN
314	TULIP	T42	C	C76	UNFROZEN
315	TULIP	T43	C	C75	UNFROZEN
316	TULIP	T44	C	C74	UNFROZEN
317	TULIP	T45	C	C73	UNFROZEN
318	TULIP	T46	C	C72	UNFROZEN
319	TULIP	T47	C	C71	UNFROZEN
320	TULIP	T48	C	C70	UNFROZEN
321	TULIP	T49	C	C69	UNFROZEN
322	TULIP	T50	C	C68	UNFROZEN
323	TULIP	T51	C	C67	UNFROZEN
324	TULIP	T52	C	C66	UNFROZEN

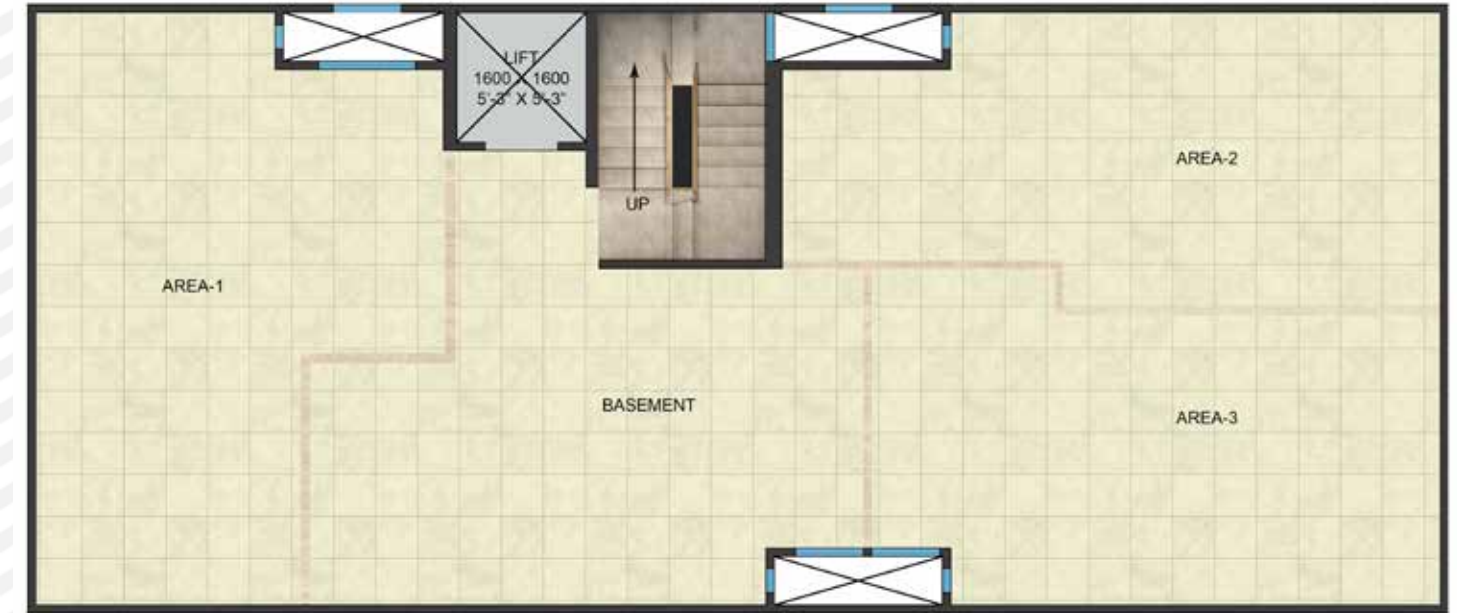


TYPE-A  
3BHK + 3 TOILET  
+ POOJA ROOM

STILT FLOOR PLAN



BASEMENT PLAN



TERRACE PLAN



UNIT PLAN





TYPE-B  
3BHK + 3 TOILET

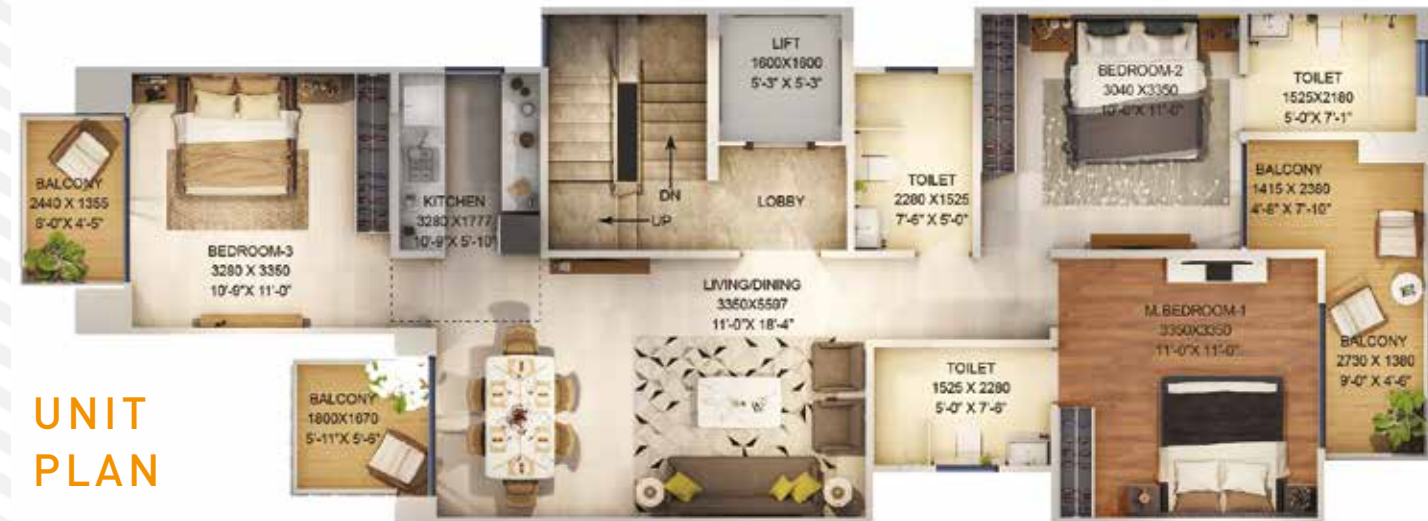
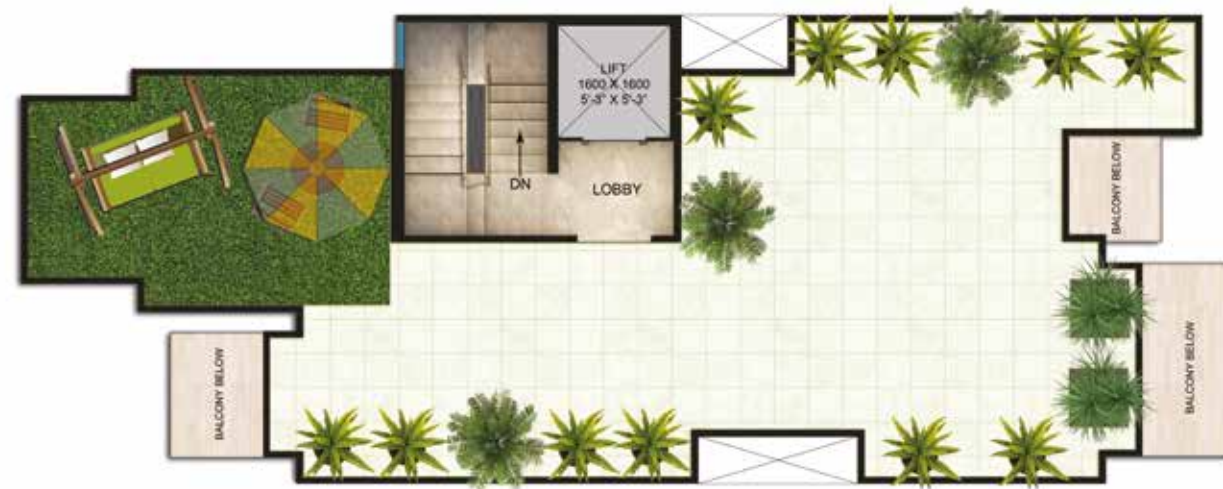
STILT FLOOR PLAN



BASEMENT PLAN



TERRACE PLAN



UNIT PLAN



TYPE-C  
2BHK + 2 TOILET

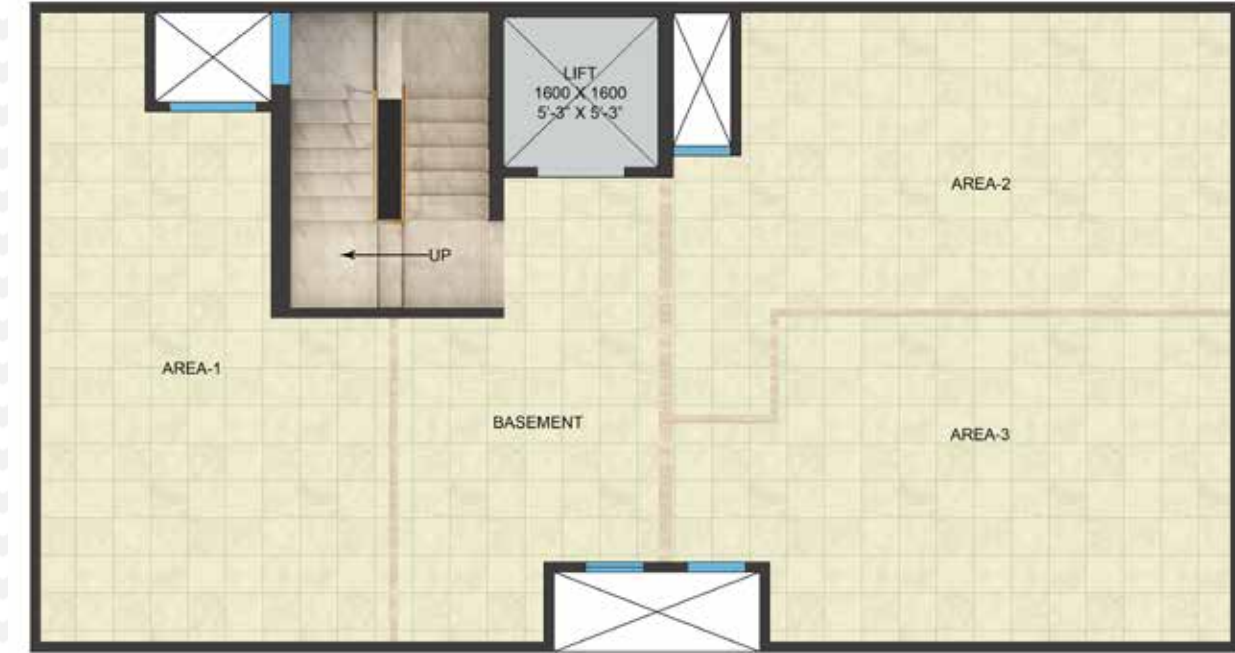
STILT FLOOR PLAN



TERRACE PLAN



BASEMENT PLAN



UNIT PLAN





# SPECIFICATIONS

## DRAWING / DINING ROOM



FLOOR  
VITRIFIED TILES



CEILING  
OIL BOUND DISTEMPER



WALL  
ACRYLIC EMULSION

## BALCONIES



FLOOR  
ANTI-SKID / MATT  
FINISH CERAMIC TILES



RAILING  
GLASS RAILING

## DOORS & WINDOWS



MAIN / INTERNAL DOOR FRAME  
HARD WOOD / RED MERANTI



INTERNAL DOOR SHUTTERS  
BOTH SIDE LAMINATED DOORS



EXTERNAL DOORS & WINDOWS  
UPVC/ALUMINIUM POWDER COATED

## ELECTRICAL



WIRING  
COPPER ELECTRICAL WIRING  
THROUGHOUT IN CONCEALED  
CONDUIT FOR LIGHT POINTS



SWITCHES / SOCKET  
ISI MARKED SWITCHES  
& SOCKETS

## BEDROOM



FLOOR  
VITRIFIED TILES



CEILING  
OIL BOUND DISTEMPER



WALL  
ACRYLIC EMULSION

## TERRACE



BRICKBAT COBA OR  
WATER PROOFING TREATMENT

## EXTERNAL DEVELOPMENT



INTERNAL ROADS  
INTERLOCKING BLOCKS/  
TREMIX CONCRETE ROAD



BOUNDARY WALL  
RCC / BRICK WALL  
WITH PLASTER &  
EXTERNAL WEATHER  
PROOF PAINT FINISH



EXTERNAL PAINT  
WEATHER PROOF TEXTURE  
PAINT IN BUILDINGS

## STRUCTURE



EARTHQUAKE RESISTANT  
RCC FRAMED STRUCTURE  
AS PER SEISMIC ZONE

## KITCHEN



FLOOR  
VITRIFIED /  
CERAMIC TILES



WALL / CEILING  
OIL BOUND DISTEMPER



DADO  
CERAMIC TILES 600 MM  
ABOVE THE COUNTER



COUNTER TOP  
GRANITE STONE



FITTINGS & FIXTURES  
ISI MARKED CP FITTINGS  
& SS SINK

## TOILET & BATH



FLOOR  
ANTI-SKID  
CERAMIC TILES



WALL  
CERAMIC TILES TILL  
4FEET / 7'-0" FEET



CEILING  
GRID FALSE CEILING



FITTINGS & FIXTURES ISI MARKED  
CP FITTINGS, WC & WASHBASIN

# BEST BRANDS FOR THE BEST EXPERIENCE

<p>TILES</p> <p><b>Kajaria</b></p> <p><b>VARMORA</b></p> <p><b>orientbell</b></p>	<p>PAINTS</p> <p><b>asianpaints</b></p> <p><b>Dulux</b></p> <p><b>Berger</b></p>	<p>DOOR LOCKS &amp; HANDLES</p> <p><b>Dorsët</b></p> <p><b>Qquba</b></p> <p><b>IPSA</b></p>	<p>GLASS</p> <p><b>SAINT-GOBAIN</b></p> <p>UPVC DOORS &amp; WINDOW PROFILES</p> <p><b>KÖMMERLING</b></p> <p><b>ÖKOTECH</b></p> <p>CP BATH FITTINGS</p> <p><b>hindware</b></p> <p><b>Jaquar</b></p> <p><b>Kerovit</b></p>	<p>LIFTS</p> <p><b>OTIS</b></p> <p><b>KONE</b></p> <p><b>Schindler</b></p> <p><b>ELEVATORS BIRLA GROUP</b></p> <p><b>FUJITEC</b></p> <p><b>thyssenkrupp</b></p>	<p>PLUMBING PIPES</p> <p><b>Supreme</b></p> <p><b>ashirvad</b></p> <p><b>BIRLA   HIL</b></p> <p>LIGHTING</p> <p><b>wipro</b></p> <p><b>OSRAM</b></p> <p><b>LEDVANCE</b></p> <p><b>SYSKA</b></p> <p><b>BAJAJ</b></p>
<p>SWITCHES</p> <p><b>legrand</b></p> <p><b>Crabtree</b></p> <p><b>wipro</b></p> <p>NORTH-WEST SANITARY FITTINGS</p> <p><b>hindware</b></p> <p><b>Jaquar</b></p> <p><b>KOHLER</b></p>	<p>WOODEN DOORS</p> <p><b>Bhutan tuff</b></p> <p><b>ramaply</b></p> <p>KITCHEN SINK</p> <p><b>CARYSIL</b></p> <p><b>Jayma</b></p>	<p>WIRES &amp; CABLES</p> <p><b>Finolex</b></p> <p><b>HAVELLS</b></p> <p><b>POLYCAB</b></p>	<p>CP BATH FITTINGS</p> <p><b>hindware</b></p> <p><b>Jaquar</b></p> <p><b>Kerovit</b></p>	<p>ELEVATORS BIRLA GROUP</p> <p><b>FUJITEC</b></p> <p><b>thyssenkrupp</b></p>	<p>LIGHTING</p> <p><b>wipro</b></p> <p><b>OSRAM</b></p> <p><b>LEDVANCE</b></p> <p><b>SYSKA</b></p> <p><b>BAJAJ</b></p>

Note : Flooring in mix design of marble, granite and tile. Accordingly, variations in shade and/ or size and/ or colour and/ or design of the tiles, motifs, mica etc. may occur.

All products, names, logos, brands, trademarks are properties of their respective owners. Product of other companies may also be used. However, priority will be given to the aforesaid brands/companies.



# ABOUT SIGNATURE GLOBAL

Signature Global believe in the policy of transparency. Though we've created our own distinct identity in the field of real estate, we're working more passionately to maintain and improve our reach in the sector. We emphasize on the core values of reliability, responsibility and global standards with regard to the International Real Estate realm.

The group has outlined its vision for 'India of Tomorrow' with a mission of 'Har Parivar ek Ghar' (A home for every family). With a vision to redefine the current conventions of Indian real estate development by championing excellence in craftsman, planning and service, the company has successfully launched 24 housing projects, all in the prime locations including Gurugram, Sohna and Karnal in Haryana and a commercial mall focussing on the interest of customers in Vaishali, Ghaziabad, Uttar Pradesh. The company has successfully delivered Solera, Synera, Andour Heights, Grand IVA and Orchard Avenue in Gurugram and offered possession of Sunrise in Karnal, months before the expected time of delivery. Each residential project is complimented with one branded retail hub christened as Signum. The hallmarks of these

projects are ideal location, impeccable quality of construction with excellent amenities at reasonable prices. They are unique in terms of planning, design, quality, workmanship, transparency, customer delight and service. We have ushered in best global practices of transparency and professionalism, with 'think global, act local' approach, doing product development as per the needs of our valued consumers.

We are offering Green Homes which are IGBC and Edge Certified that provides a solution to capitalize on the value of green buildings by promoting benefits to customers while protecting environment. We are deploying cutting edge technology and best project management techniques to achieve scale and efficiency to boost affordability.

Signature Global works with a team of experienced architects, master planners and designers who are among the best in the industry. We had partnered with several leading National and International institutions like IFC – an arm of world bank, HDFC CAPITAL, ICICI Prudential etc and takes pride in growing its reach to customers by seeking direct online applications. Leading a team of

highly enthusiastic professionals is always an enjoyable task. The same becomes even more interesting when the society starts recognizing and rewarding your efforts. In the last couple of years, we have won several awards from prestigious media houses for our outstanding contribution to the real estate. We were awarded as 'Haryana's Icons' and 'Emerging Developer' by Times of India, 'Business Leaders in Affordable Housing' by ASSOCHAM, 'Best Upcoming Developer of the Year' by Realty Sutra, 'World Best Realty Brand Award' by Realty Fact and 'Game Changer of India Realty' and 'Best Developer of the Year' awards by Indian Realty Award, 'Best LIG Housing project for Solera' by PMAY Empowering India 2019, 'Six Star CARE Rating for Solera', ICRA the rating agency has added new feathers by adjudging Synera as seven star rating project. Recently, we have been awarded as 'Affordable Housing Project of the Year for Solera', 'Electronic Media Campaign of the Year' and 'Sustainable Business Leader of the Year' by Realty Plus. We have also got ISO 9001:2015; 14001:2015; 45001:2018 Certification.

## PROJECTS LAUNCHED

**RESIDENTIAL 24**

**COMMERCIAL 23**

## MAKING REALTY A REALITY WITH RELIABILITY AND RESPONSIBILITY



## PROJECTS DELIVERED

**RESIDENTIAL 6**

**COMMERCIAL 6**

