

For Bookings
86044-06044



ATS KABANA HIGH

LOCATION OF SITE:

PLOT NO. – C-01,
SECTOR -04, GREATER NOIDA,
UTTAR PRADESH



LOCATION OF SITE:



SITE PLAN:

PLOT AREA
= 10,000 SQ.MT.

TOTAL SALEABLE AREA
= 5,00,000 SQ.FT.



VIEWS:

NO. OF FLOOR = 2 NOS. BASEMENT+ LOWER GROUND FLOOR+UPPER GROUND FLOOR + 1ST TO 29TH FLOOR

- HYPERMARKET IS AT UPPER BASEMENT LVL.
- RETAIL SHOPS FROM LOWER GROUND FLOOR TO 2ND FLOOR
- RETAIL SHOPS, FOOD-COURT & CINEMA AT 3RD FLOOR LVL.
- RESTAURANTS / PUB AT 4TH FLOOR LVL.
- OFFICES FROM 5TH TO 29TH FLOOR LVL.

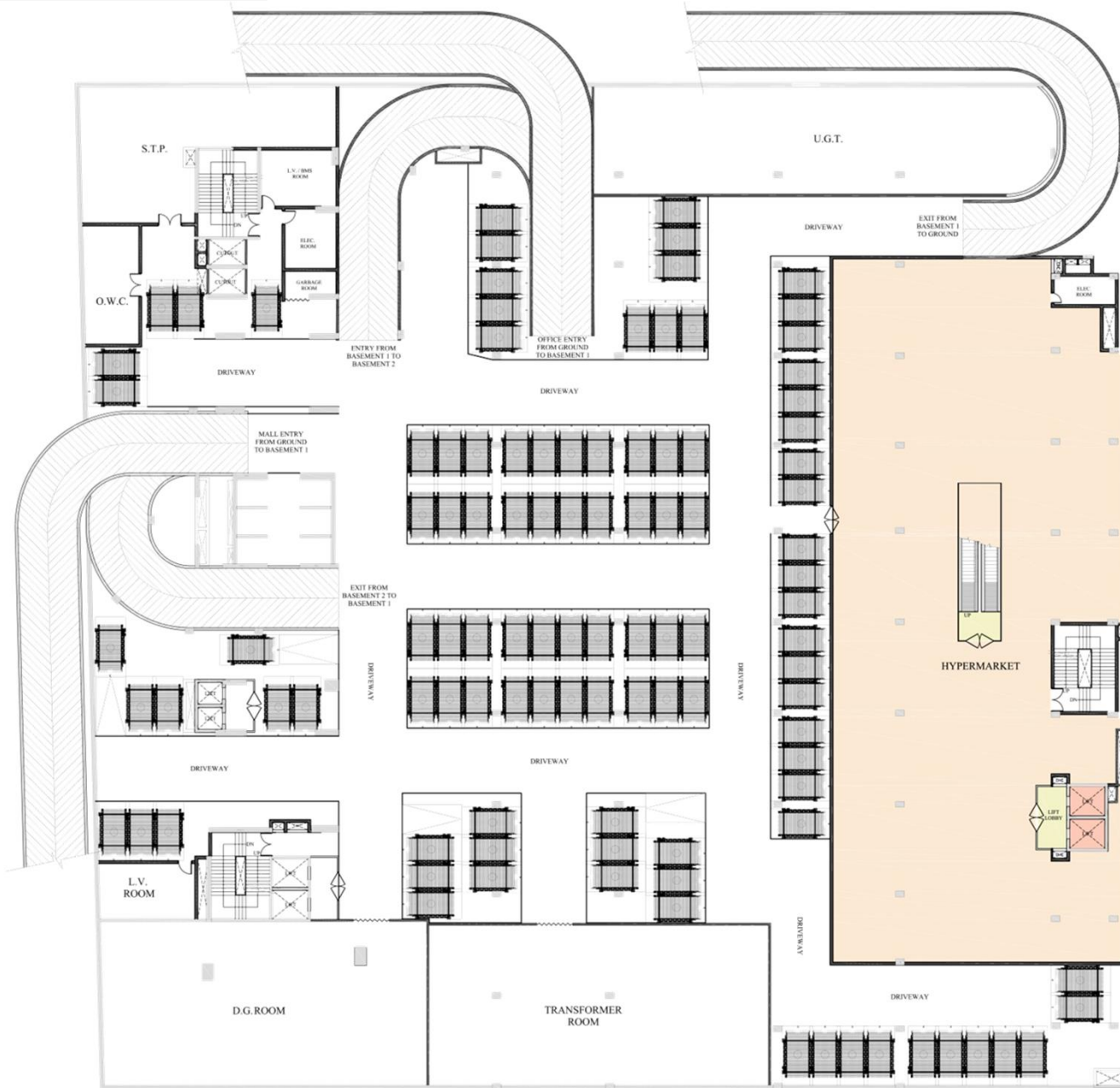


ROAD SIDE EVENING VIEW

VIEWS:



UPPER BASEMENT PLAN:



HYPER MARKET
SALEABLE AREA = 18936 SQ.FT.



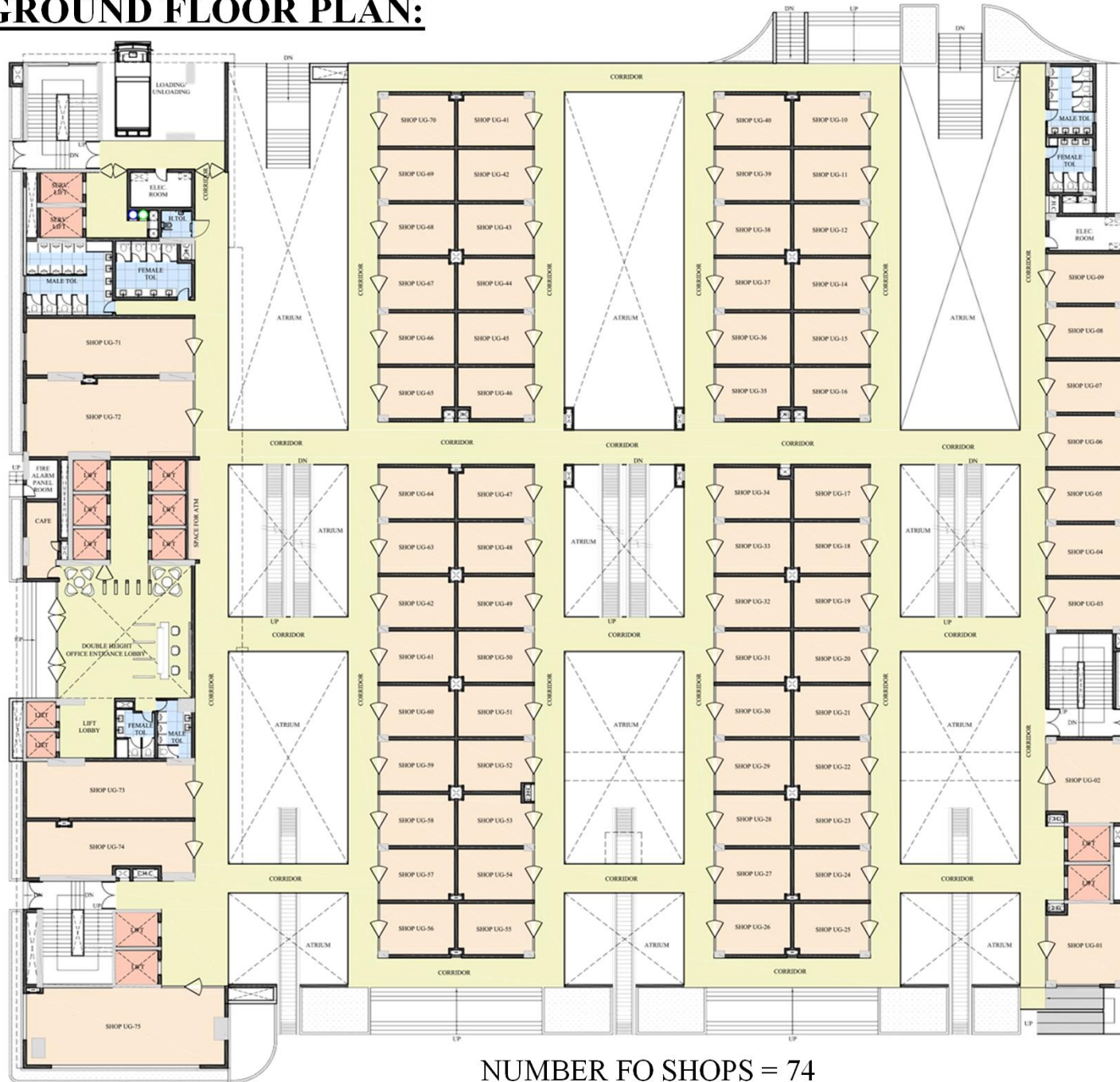
LOWER GROUND FLOOR PLAN:



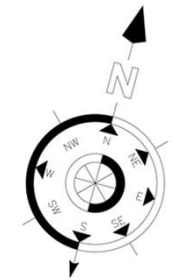
NUMBER OF SHOPS = 82
SALEABLE AREA = 47692 SQ.FT.



UPPER GROUND FLOOR PLAN:



NUMBER OF SHOPS = 74
 SALEABLE AREA = 32177 SQ.FT.



FIRST FLOOR PLAN:



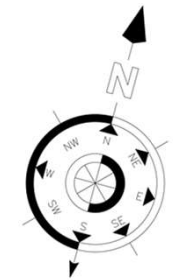
NUMBER OF SHOPS = 76
 SALABLE AREA = 34306 SQ.FT.



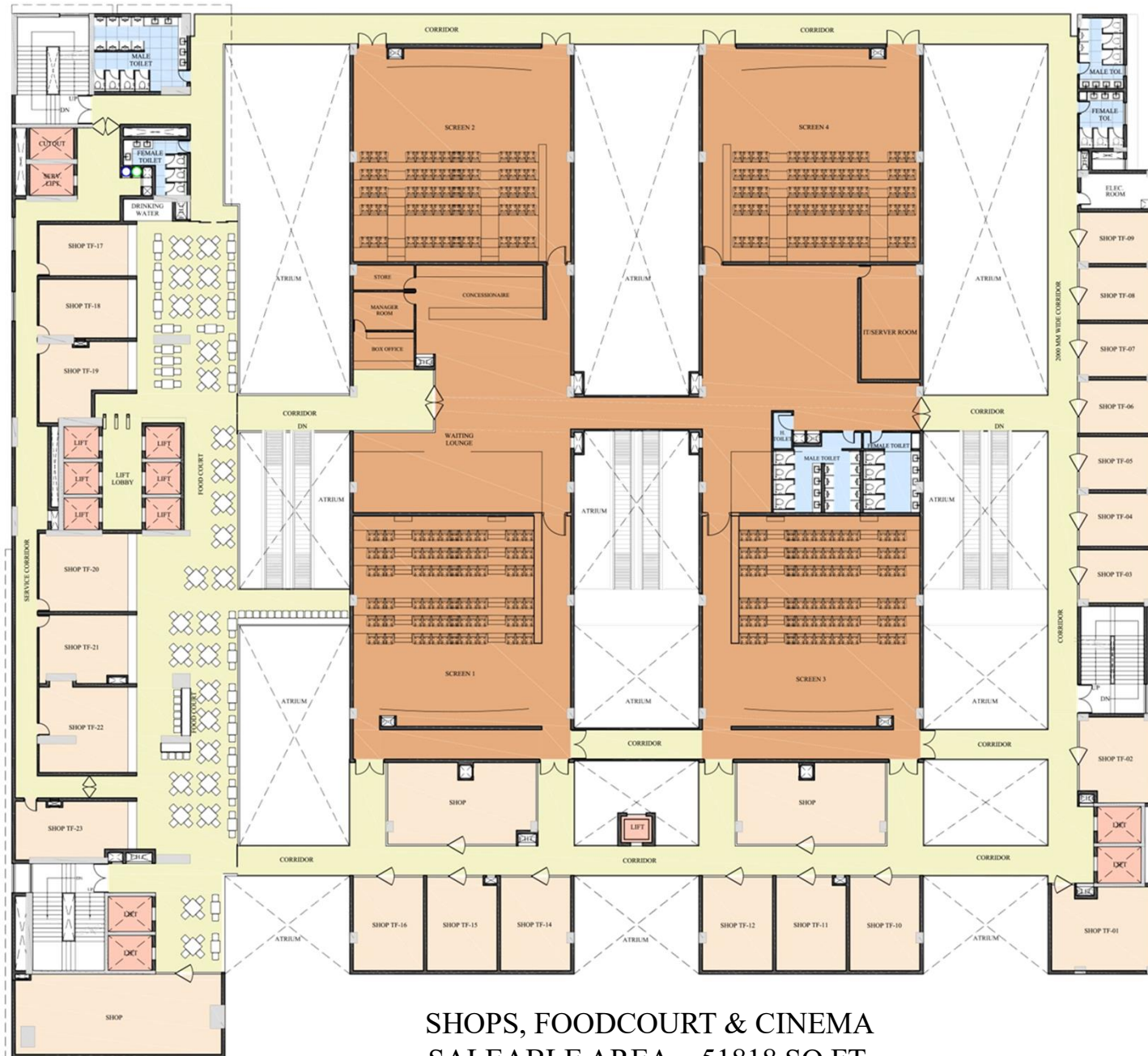
SECOND FLOOR PLAN:



NUMBER OF SHOPS = 78
 SALEABLE AREA = 36352 SQ.FT.



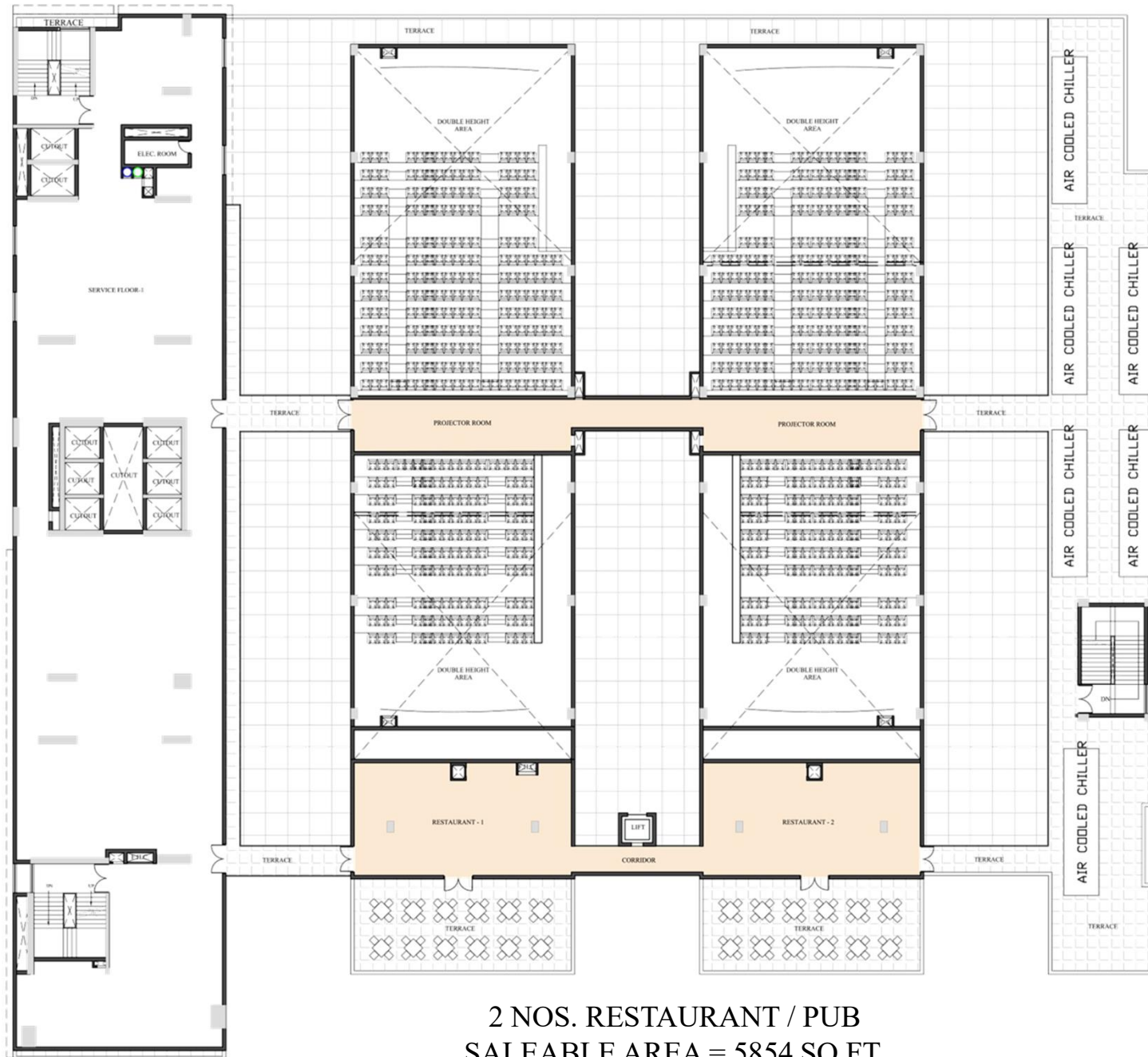
THIRD FLOOR PLAN:



SHOPS, FOODCOURT & CINEMA
 SALEABLE AREA = 51818 SQ.FT.

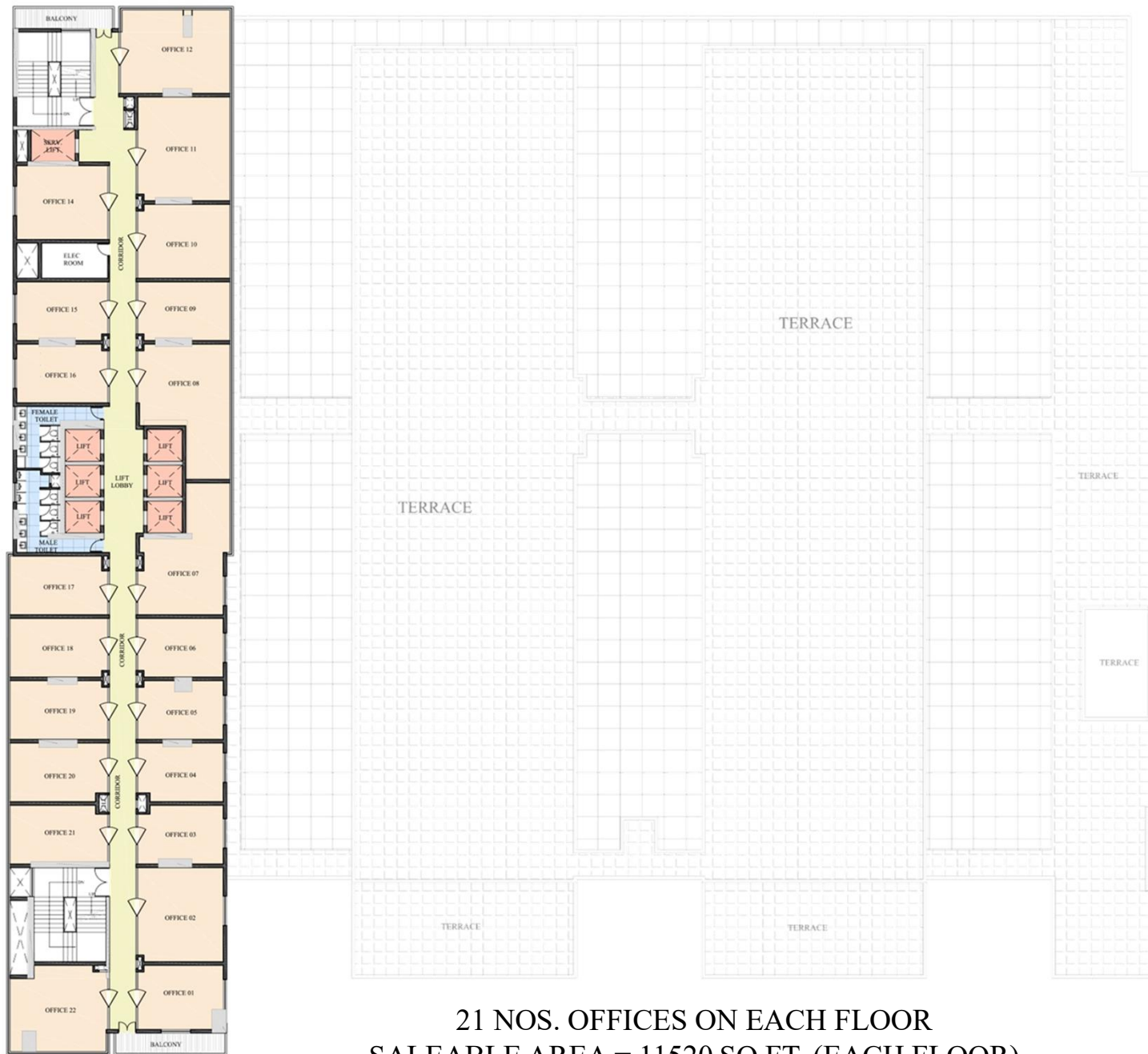


FOURTH FLOOR PLAN:



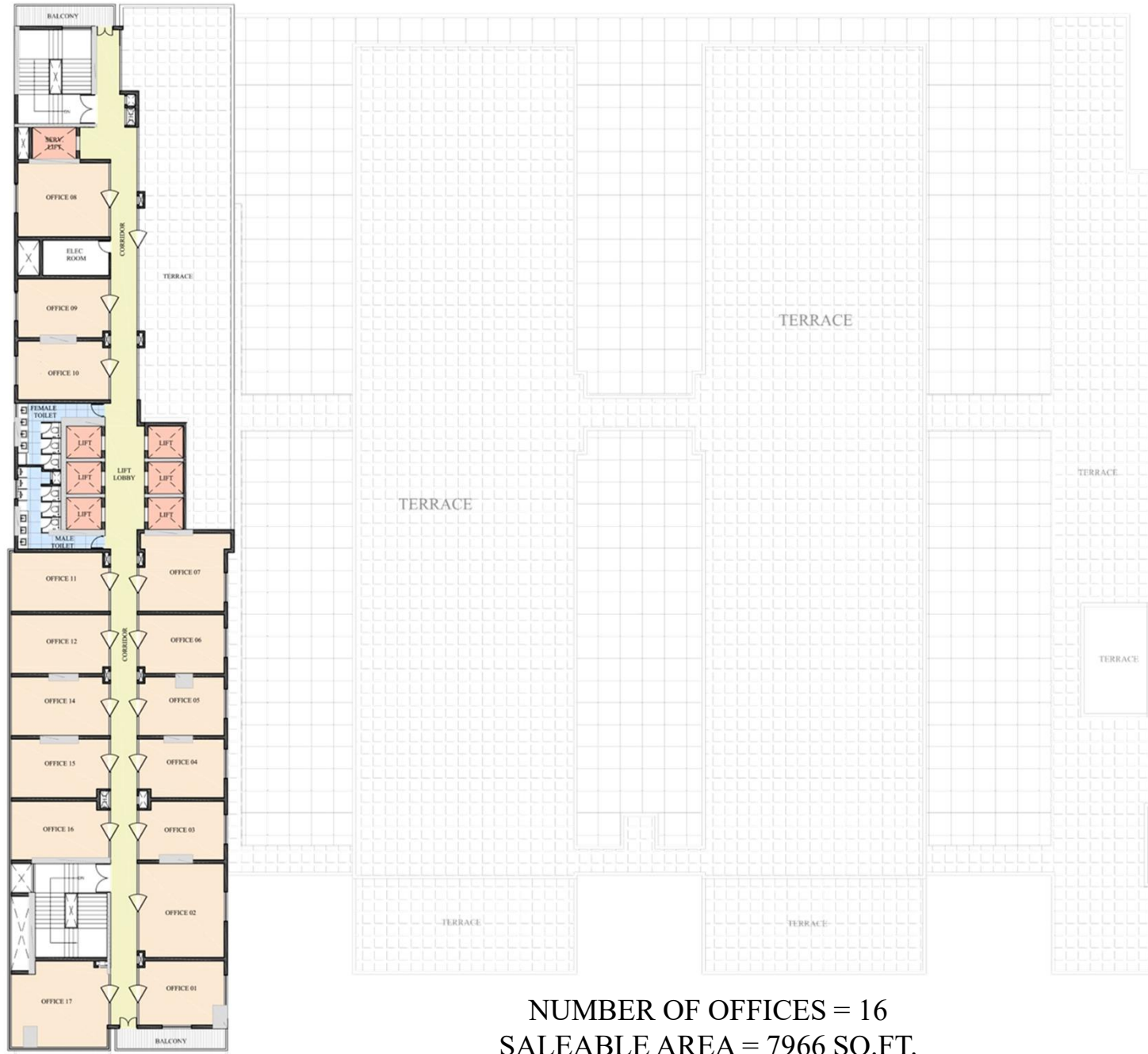
2 NOS. RESTAURANT / PUB
SALEABLE AREA = 5854 SQ.FT.

5TH TO 28TH FLOOR PLAN:



21 NOS. OFFICES ON EACH FLOOR
SALEABLE AREA = 11520 SQ.FT. (EACH FLOOR)

29TH FLOOR PLAN:



NUMBER OF OFFICES = 16
SALEABLE AREA = 7966 SQ.FT.



VIEWS:

ROAD SIDE NIGHT VIEW



VIEWS:



SHOP CLOSE-UP VIEW

VIEWS:



SHOP CLOSE-UP VIEW

VIEWS:



FOOD COURT

VIEWS:



ATRIUM & CORRIDORS

VIEWS:



DOUBLE HEIGHT
OFFICE ENTRANCE
LOBBY

For Bookings
86044-06044