



ELAN  
**PARADISE™**  
Exclusive for Exclusives

**For Bookings**  
**86044-06044**



THE  
MOST SUCCESSFUL  
PROJECT OF 2021

# MORE THAN THE MINDS PERCEIVE...



Paradise is more than a retail concept. It is the most revolutionary vision that is timeless and way ahead of today. It is an exclusive space for the most exclusives who value rarity in the most unique form. It is a singular magnificence that is ready to take on the retail world by storm. It is Paradise – it is more than the mind perceive.

## THE CONCEPT

The most innovative and advanced commercial retail destination to bear Elan's badge is Paradise. Paradise is timeless. It is conceptualised for the generations to experience retail in the most exceptional way. The showcase of Paradise retail concept is for

Paradise Plaza  
Fountain Court  
Galaxy Court  
Palm Boulevard  
Dream Plaza  
Infinity Street  
Visionary Vista





The grandest & iconic expression for one of a kind welcoming experience graced by a high water curtain, a glittering fountain and massive interactive spaces.

*sector* 50 Gurugram  
THE MOST ICONIC LANDMARK

Paradise  
Plaza



An experience of a celestial journey that not only attracts, but leaves an everlasting impression



*just below the sky,*  
A SKY OF  
OPPORTUNITIES

DESIGNED BY  
**uhalondon**

ARCHITECT  
**ARCOP**





UNTHINKABLE  
UNFOLDS

*retail*  
IN THE MOST  
ULTIMATE  
NATURAL  
ENVIRONS



Witness the magnificence as panoramic glass lifts emerge through the mighty waterfall and F&B takes the central space below the open sky enveloped in pristine natural setting.

## Fountain Court





# THE GREATEST LUXURY RETAIL REVOLUTION

*is here*



Unveiling the multidimensional spaces where retail outlets encircle new-age kiosk pedestals to create an astronomical canvas.



## Galaxy Court



A gateway to dream plaza from galaxy court, it is an unwinding experience set amidst sit-outs, shops and lively spaces.

# Palm Boulevard





ELAN  
PARADISE  
Exclusive for Exclusives

This uniquely conceptualised landmark offers luxury in the most refreshing natural milieu - adding sheer pleasure to every moment of your journey through this never seen marvel. It's wondrous plazas and vistas are enhanced with bold and inviting designs that takes the excitement to the next level with every step and every gaze. This is retail. Reimagined.

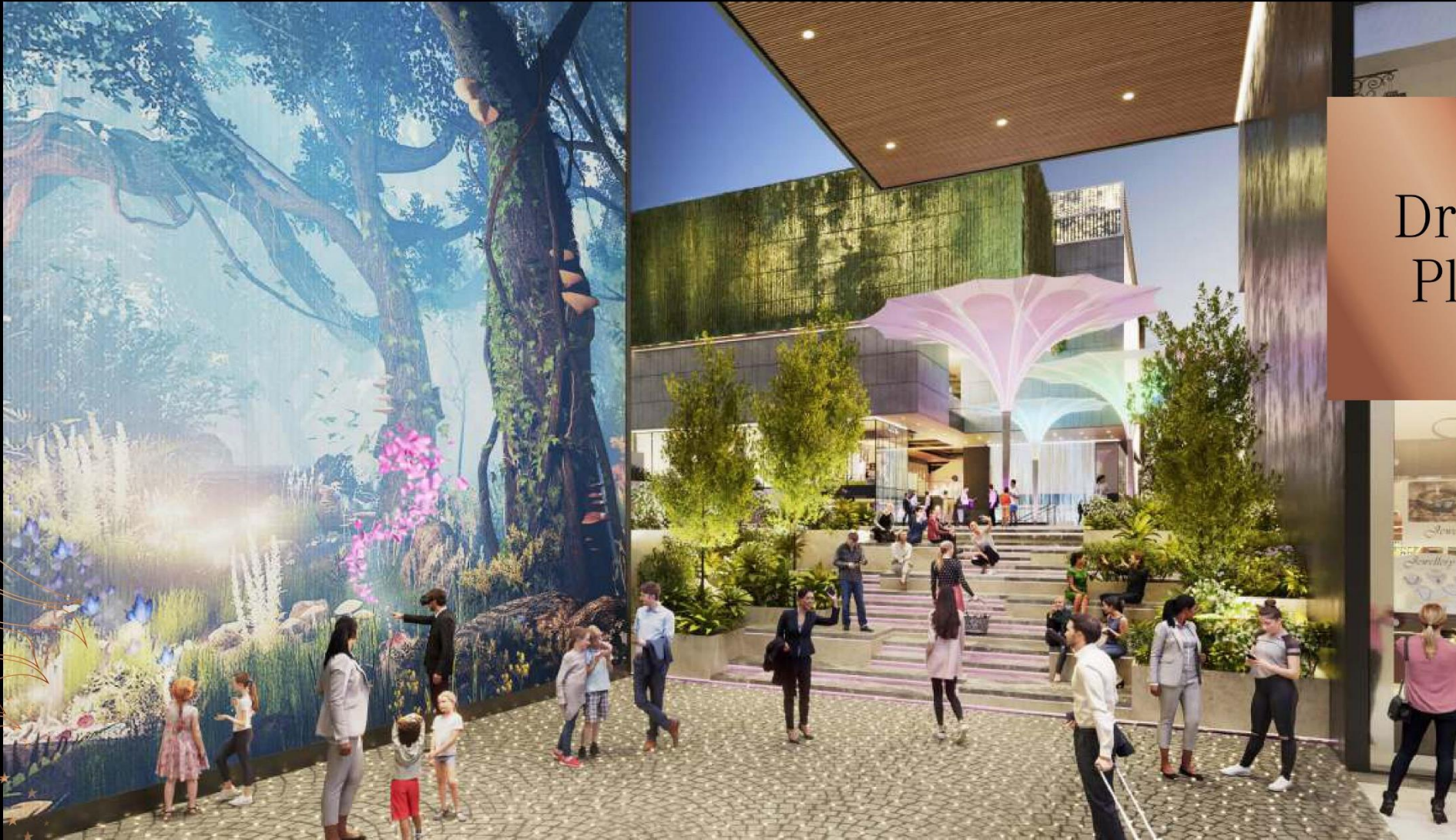
ONE  
OF A KIND  
RETAIL  
PROJECT  
IN DECADES.

*made for years ahead.*





A dream turned into a massive plaza that blends into dramatic spaces unveiling a new surprise on every step.



Dream  
Plaza



Infinite heavenly experiences  
through a journey from  
Paradise to Dream Plaza

# Infinity Street



A selection of very exclusive retail bouquet that embraces natural surroundings seamlessly redefines the realm of commercial destination. Paradise is a showcase of inimitable retail spaces that have created boundless opportunities and new paths so effortlessly that here success has become almost synonymous with presence.

IMPRESSES  
ALL WITH  
HIGH  
PERFORMING  
RETAIL  
CONCEPT  
*enveloped in nature*



Visionary Vista is punctuated with heavenly surprises - massive projection screens, selfie points, water features, performance area and gathering / assembly spaces; finally leading to the ultimate journey of gigantic heavens plaza.



Visionary  
Vista







THE  
GREATEST  
THING  
RETAIL  
*has seen till now*



The elevated food court is all set to take the flavours on an entirely new level.



Food  
Court



Close to nature and open to sky, F&B outlets are an elevated experience here.

## Restaurant Terrace





A timeless retail landmark,  
that seamlessly blends in its vicinity,  
has set an example for the future of  
commercial realty

*ultimately*  
**UNMATCHED**







**EXCLUSIVE OFFER**  
FOR THE EXCLUSIVES

# GOLD

---

Below 750 Sq.ft. : **25 GMS**

Above 750 Sq.ft. : **50 GMS**



Get **12%**

**FIXED RENTALS**

TILL OFFER OF POSSESSION







**AREA**  
**DISCOUNT** **X** **2**



**DOUBLE**  
YOUR BOOKING AMOUNT



# SPIN THE WHEEL

Areas Above 500 Sq.ft.



Areas Below 500 Sq.ft.  
**APPLE WATCH**



**MACBOOK**



**SMART TV  
(55 INCH)**



**GOLD COIN  
10 GMS**



**IPHONE 12**



**APPLE WATCH**

*a destination*  
THAT BREAKS  
ALL RULES





REVISED  
RATES

		Current Rate
LG Floor	<del>57,750</del>	52,750 Psf
Ground Floor	<del>57,750</del>	52,750 Psf
First Floor	<del>37,750</del>	34,750 Psf
Food Court	<del>31,750</del>	29,750 Psf
Restaurant 3rd Floor	<del>32,750</del>	30,750 Psf
Restaurant 4th Floor	<del>29,750</del>	27,750 Psf

Valid Till 10th August 2021

**SPECIAL PAYMENT PLAN**

**40:60**

**PAYMENT PLAN**





## BUILDING THE FUTURE

Elan Group, today is one of the finest boutique real estate developers in the country. The group is committed to setting new benchmarks of excellence in the commercial and retail real estate segment. The group's bespoke offerings are constantly redefining customer experiences with innovative and cutting-edge design and architecture, best-in-class amenities and conveniences. Since its inception, the group has stood for – 'Building the Future' and looks forward to contributing to the growth of the real estate sector through ultra-luxury and cost effective retail, commercial and hospitality projects.

Strategically located in Gurugram, the group's projects have been conceptualized on the 'under one roof' concept and are poised to emerge as the one-stop destination for all the retail and entertainment needs.



ELAN  
**EPIC**  
*this is it.*

ELAN  
**MIRACLE**



ELAN  
**TOWN  
CENTRE**





## BUILDING THE FUTURE

Elan Group, today is one of the finest boutique real estate developers in the country. The group is committed to setting new benchmarks of excellence in the commercial and retail real estate segment. The group's bespoke offerings are constantly redefining customer experiences with innovative and cutting-edge design and architecture, best-in-class amenities and conveniences. Since its inception, the group has stood for – 'Building the Future' and looks forward to contributing to the growth of the real estate sector through ultra-luxury and cost effective retail, commercial and hospitality projects.

Strategically located in Gurugram, the group's projects have been conceptualized on the 'under one roof' concept and are poised to emerge as the one-stop destination for all the retail and entertainment needs.



ELAN  
**EPIC**  
*this is it.*

ELAN  
**MIRACLE**



ELAN  
**TOWN  
CENTRE**



**For Bookings  
86044-06044**